



CÂMARA MUNICIPAL
VIANA DO CASTELO

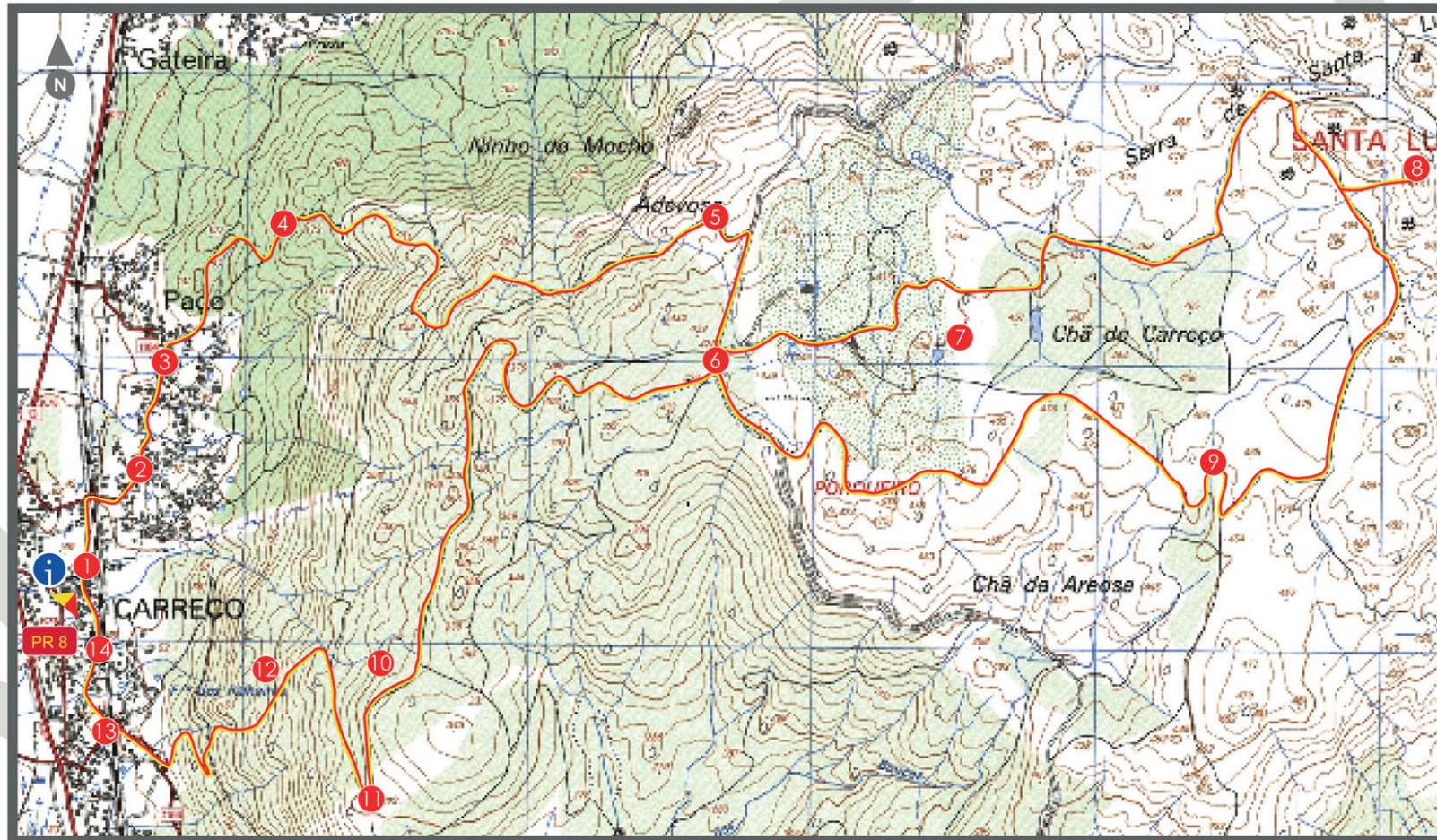
useful contacts

Viana do Castelo City Council > 258 809 300
Viana Welcome Centre > 258 098 415
Hospital > 258 802 100
Fire Department > 963 442 203 / 258 840 400
Volunteer Fire Department > 258 800 840
GNR (Portuguese National Guard) > 258 840 470
PSP (City Police Department) > 258 809 880
SOS - Emergency Services > 112
Emergency number for Forest Fires > 117

map of viana do castelo



trail map in km



information PR 8

Name of Trail
PR 8 / Trail of Chão

Sponsoring Organization
Viana do Castelo City Council
SIRC - Learning and Entertainment
Society of Carreço

Trail System
Average Trail

Location
Mountain area of Santa Luzia /
Carreço

Distance
19.9 km

Initial Level
57m

Maximum Level Reached
550m

Minimum Level Reached
57m

Time
6h00m

Difficulty
Moderate

Trail Type/Character
Landscape/ Ecological/ Cultural

Start Point/End Point
SIRC - Learning and Entertainment
Society of Carreço

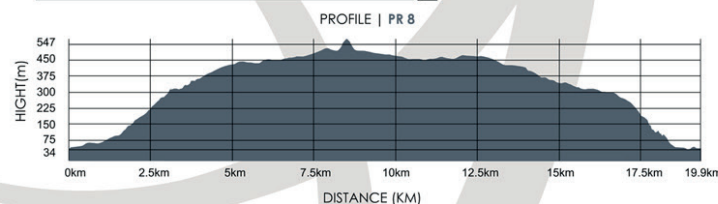
Latitude: 41° 44' 58.97" N
Longitude: 08° 51' 50.55" W

Start Point/End Point

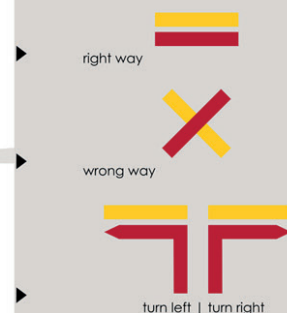
PR 8

- | | |
|---|--|
| 1 SIRC - Learning and Entertainment
Society of Carreço | 8 Talefe or Gurita (Geodesic Markings
Indicating a Geographical Position)
de Couço |
| 2 Saint Sebastian Chapel | 9 Forrestral House of Fonte Louçã |
| 3 Churra Slab | 10 Rupestral Engravings |
| 4 Paço coastal pathway | 11 Plateau of Mior or Bandeiras |
| 5 Afife Sign Watchtower | 12 Carreço Coastal Pathway |
| 6 Pereirada Crossroad | 13 S. Paio Chapel |
| 7 Da Chão Plateau | 14 Cal Field and Parochial Church |

profile graph / hight/distance



trail mark

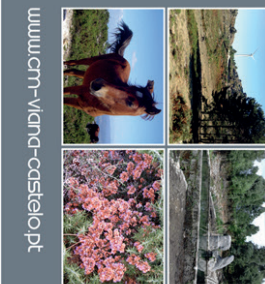


responsibilities

"The recommended walking trails do not exempt their users or those who promote them from taking the responsibility for any possible damage to property or personal injury which may occur when using the trails."

trail rules

- >Stay on the trail at all times – Pay attention and obey trail signs and markings.
- >Avoid making loud noises.
- >Respect Private Property.
- >Do not litter. Take all litter with you and place in rubbish bins.
- >Be careful with livestock. Do not disturb animals.
- >Preserve nature. Do not pick flowers, collect rocks or catch animals.
- >Avoid walking alone in the mountains.
- >Be careful when foggy.
- >Always use appropriate gear and clothing – hiking boots, a raincoat and a hat.
- >Do not make fire at any time.
- >Help preserve the trail.



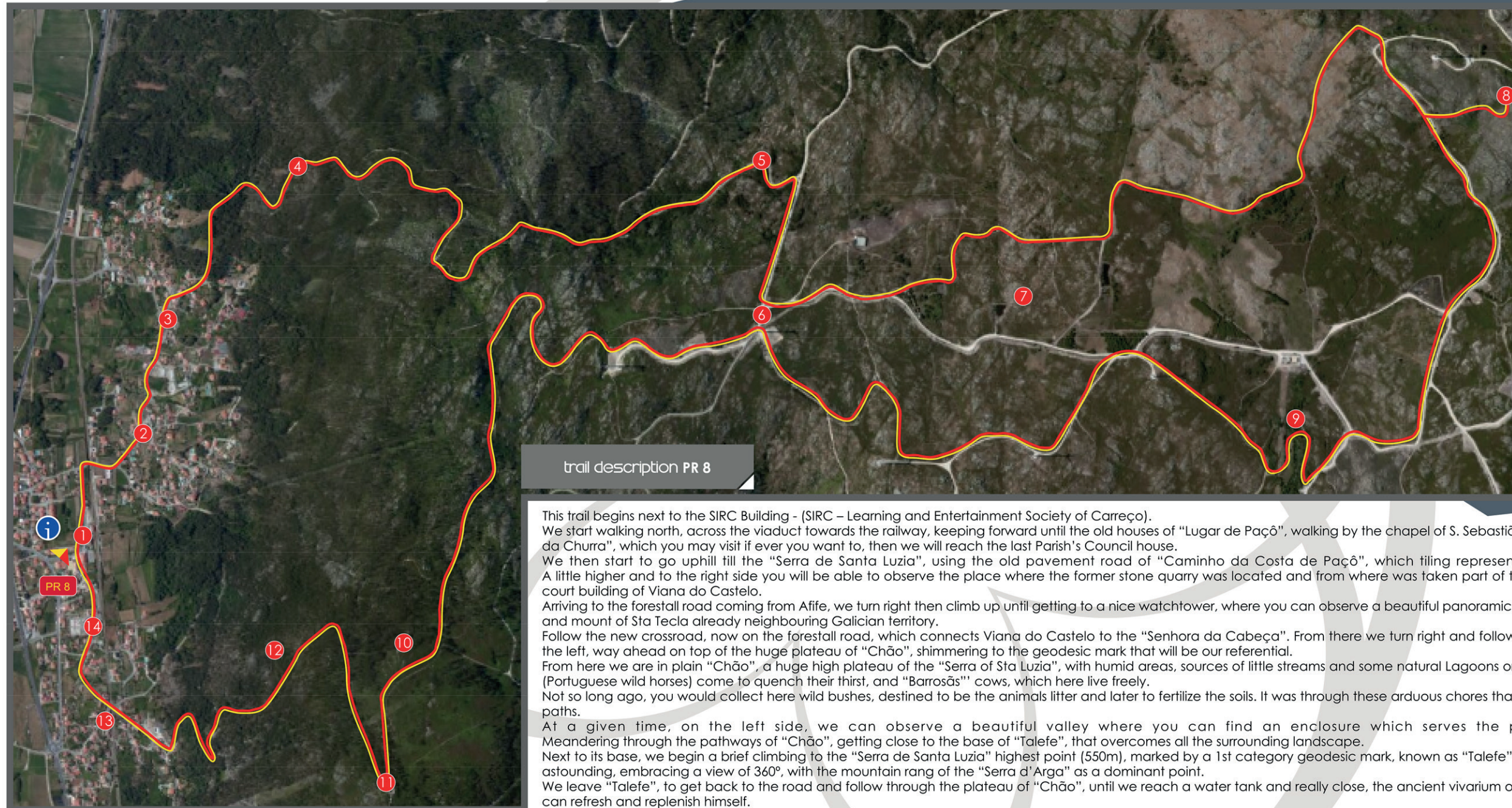
www.cm-viana-castelo.pt



Trail of Chão

PR 8

Carreço



trail description PR 8

This trail begins next to the SIRC Building - (SIRC – Learning and Entertainment Society of Carreço).

We start walking north, across the viaduct towards the railway, keeping forward until the old houses of “Lugar de Paçô”, walking by the chapel of S. Sebastião, then to the rupestrine engravings of “Lage da Churra”, which you may visit if ever you want to, then we will reach the last Parish’s Council house.

We then start to go uphill till the “Serra de Santa Luzia”, using the old pavement road of “Caminho da Costa de Paçô”, which tiling represent engraved remnants of ox cart’s wheels. A little higher and to the right side you will be able to observe the place where the former stone quarry was located and from where was taken part of the building material was used for the actual court building of Viana do Castelo.

Arriving to the forestall road coming from Afife, we turn right then climb up until getting to a nice watchtower, where you can observe a beautiful panoramic view over the sea, Afife, Vila Praia de Âncora and mount of Sta Tecla already neighbouring Galician territory.

Follow the new crossroad, now on the forestall road, which connects Viana do Castelo to the “Senhora da Cabeça”. From there we turn right and follow south, until the crossroad of “Pereirada”. To the left, way ahead on top of the huge plateau of “Chão”, shimmering to the geodesic mark that will be our referential.

From here we are in plain “Chão”, a huge high plateau of the “Serra of Sta Luzia”, with humid areas, sources of little streams and some natural Lagoons or conditioned by men, where the “Garranos” (Portuguese wild horses) come to quench their thirst, and “Barrosãs” cows, which here live freely.

Not so long ago, you would collect here wild bushes, destined to be the animals litter and later to fertilize the soils. It was through these arduous chores that originated the close Parish Councils to cross paths.

At a given time, on the left side, we can observe a beautiful valley where you can find an enclosure which serves the purpose of branding the “Garranos”. Meandering through the pathways of “Chão”, getting close to the base of “Talefe”, that overcomes all the surrounding landscape.

Next to its base, we begin a brief climbing to the “Serra de Santa Luzia” highest point (550m), marked by a 1st category geodesic mark, known as “Talefe” or “Gurita de Couçe”. From here, the view is astounding, embracing a view of 360°, with the mountain rang of the “Serra d’Arga” as a dominant point.

We leave “Talefe”, to get back to the road and follow through the plateau of “Chão”, until we reach a water tank and really close, the ancient vivarium of “Fonte Louçã”, enjoyable place where one can refresh and replenish himself.

Closely to the sources, you can still encounter ancient mine trenches (ore mines) of the past century.

We keep forward crossing path with the “Chão” towards the “Alto do Porqueiro”, really close to the Aeolian Tower nº 9, from where once again you can enjoy the view. After a brief descent, we end once more by the “Pereirada” crossroad, now leaving the plateau of “Chão” and beginning our descent.

We use the access pathway to the Aeolian Tower nº 21 and further down we catch a new forestall pathway to the west. A brief stretch ahead, we turn south and keep going always half way down, enjoying the view to the Atlantic Ocean.

A little before the “Alto do Mior” in the “Calvo” exist other rupestrine engravings located in a specific terrain. We keep on going until we reach a detour to the “Alto do Mior”, better known as the “Miradouro das Bandeiras” (the flags watchtower), one of the high points of this journey, through the enchanting landscape provided by the old houses of the Areosa, Afife and Carreço Parish Councils. It is with an ocean right in front of us that we keep our descent towards Carreço, wandering to the north, for a little to finally turn left entering the century old ancient pavement of the “Caminho da Costa de Carreço”, which goes down meandering. It was used during generations by numerous oxcarts, which left us witnessing the deeply marked granite pavement, as well as some dated stones (periods), signalling the periodic community interventions for its maintenance.

This pavement is cut down the street by some far covered area giving access to the “alto da serra” and the Aeolian park. On the other side, we use yet again the pavement pathway from “Costa de Carreço” going down until reaching the first houses of the area, place where we can observe remains of an ancient pathway populated with stone made crosses. We then walk by the S. Paio chapel, which according to the tradition, was the 1st church of the Carreço Parish Council.

After we walk by the “Largo do Aral”, “Campo da Cal”, Parochial Church, until finally ending back to the SIRC, end of our journey.

