

> TRAIL NAME  
PR 15 – Perre Walking Trail I  
PR 16 – Perre Walking Trail II

> PROMOTING ENTITY  
Perre Parish Council  
Viana do Castelo City Council

> TRAIL SYSTEM  
Average Trail

> LOCATION  
Perre

> DISTANCE  
PR 15 | 6.2 Km  
PR 16 | 6.3 Km

> INITIAL QUOTA  
PR 15 - PR 16 | 69m

> MAXIMUM QUOTA REACHED  
PR 15 | 77m  
PR 16 | 69m

> MINIMUM QUOTA REACHED  
PR 15 | 36m  
PR 16 | 17m

> DURATION  
2h00m

> DEGREE OF DIFFICULTY  
Easy

> ROUTE SCOPE  
Landscape/ Ecological/ Cultural

> DEPARTURE/ ARRIVAL POINT  
Perre Parish Council

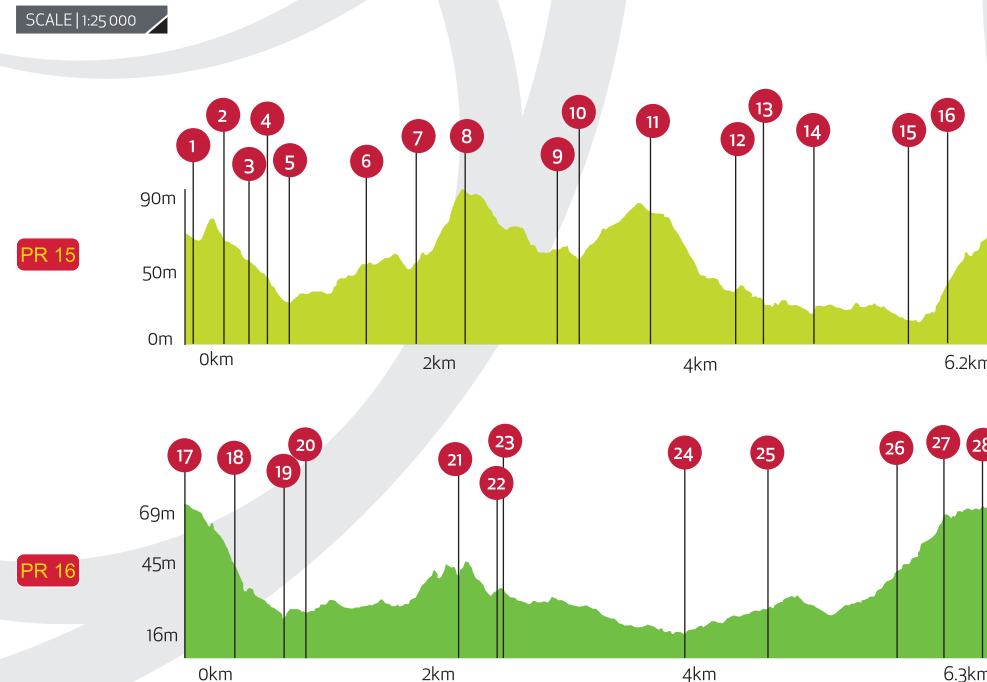
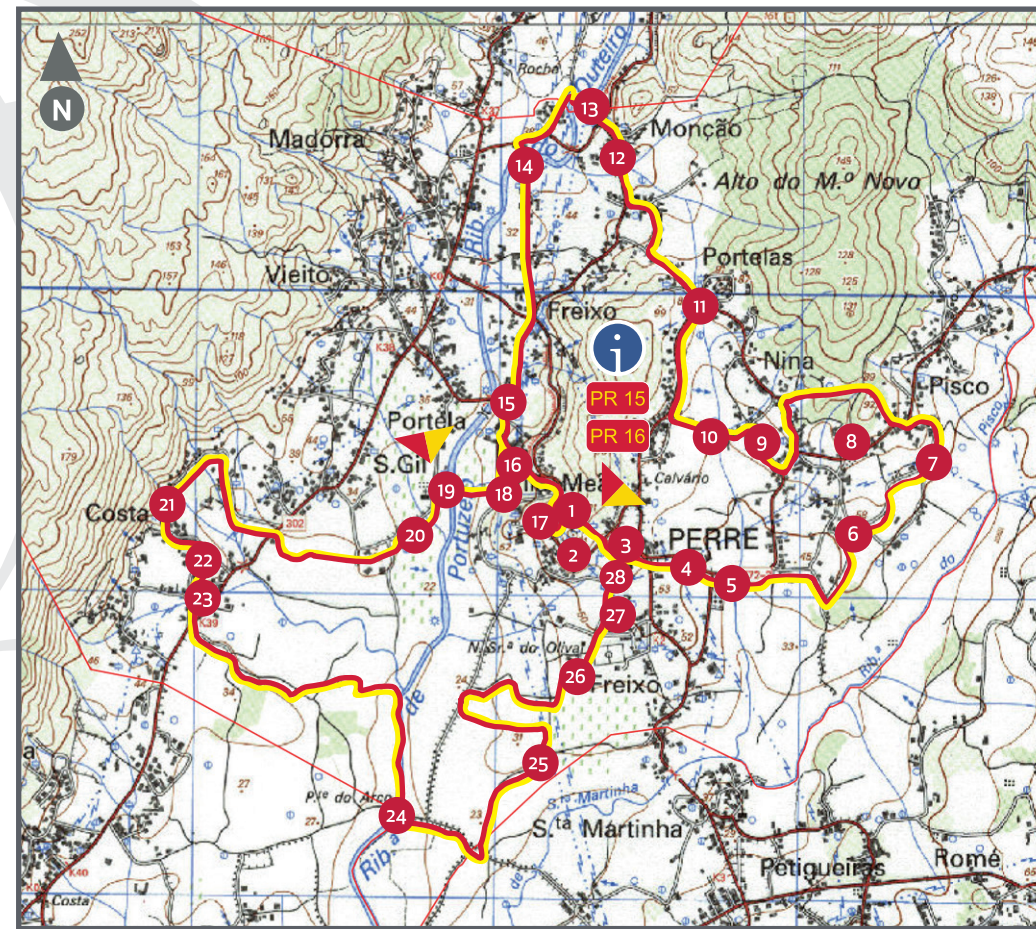
> LAT./ 41° 43' 21.05" N  
> LONG./ 08° 46' 58.19" W



## useful contacts

- > Viana do Castelo City Council  
258 809 300
- > Viana Welcome Centre  
258 098 415
- > Hospital  
258 802 100
- > Fire Department  
963 442 205 / 258 840 400
- > Volunteer Fire Department  
258 800 840
- > GNR (Portuguese National Guard)  
258 840 470
- > > PSP (City Police Department)  
258 809 880
- > SOS - Emergency Services | 112
- > Emergency Number for Forest Fire | 117

## profile graph high/distance



## STAR POINT | END POINT

### PR 15

- 1 Parish Council
- 2 Calvary Hill
- 3 Parish Church
- 4 Chapel and Stone Cross
- 5 Sr<sup>a</sup> of Dolores Chapel
- 6 N<sup>a</sup> Sr<sup>a</sup> Conceição Chapel
- 7 Bento Novo Estate
- 8 Bela Vista Viewpoint
- 9 Washing Place
- 10 Nina Fountain
- 11 Portelas Square
- 12 N<sup>a</sup> Sr<sup>a</sup> Fátima Chapel
- 13 Parola Watermill
- 14 João Mestre Watermill
- 15 Bridge
- 16 Sr<sup>a</sup> do Resgate Chapel

### PR 16

- 17 Parish Council
- 18 Sr<sup>a</sup> of Resgate Chapel
- 19 Morais Watermill
- 20 S. Francisco Xavier Chapel
- 21 Water Pump
- 22 Winery
- 23 S. João Chapel
- 24 Medieval Arco Bridge
- 25 Picoutos Stone Cross
- 26 Sr<sup>a</sup> of Olival
- 27 Parish Council Museum
- 28 Museological Center of Archeology - Castro do Vieito

### PR 15



### PR 16



## trail mark



right way



wrong way



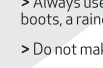
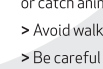
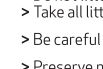
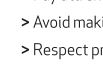
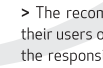
turn left | turn right

## responsibilities

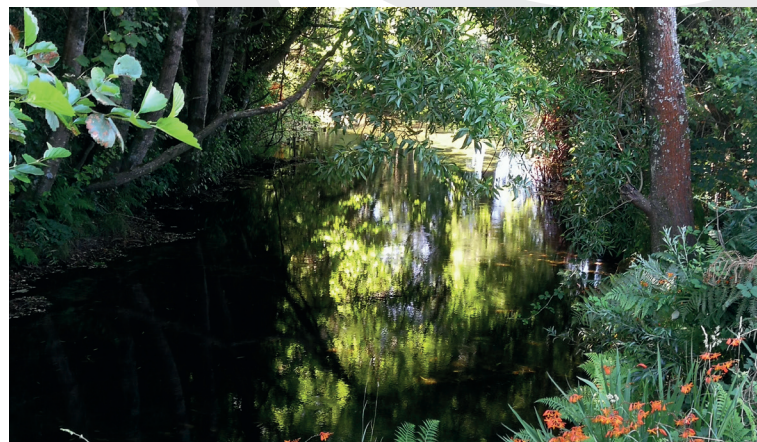
> The recommended walking trails do not exempt their users of those who promote them from taking the responsibility for any possible damage to property or personal injury which may occur when using the trails.

## trail rules

- > Stay on the trail at all times.
- > Pay attention and obey trail signs and markings.
- > Avoid making loud noises.
- > Respect private property.
- > Do not litter.
- > Take all litter with you and place in rubbish bins.
- > Be careful with livestock. Do not disturb animals.
- > Preserve nature. Do not pick flowers, collect rocks or catch animals.
- > Avoid walking alone in the mountains.
- > Be careful when foggy.
- > Always use appropriate gear and clothing - hiking boots, a raincoat and a hat.
- > Do not make fire any time.
- > Help preserve the trail.







This trail is located in the village of Perre, belonging to the Viana do Castelo region. The starting point is next to the building that houses the Parish Council. Walk down Estrada da Igreja for about 100 metres and turn left into Calçada do Castro where you will find the Chapel of Our Lady of Ransom. At the bottom of the road (descent) continue on your left into Caminho Vila Meã and after about 150 metres turn right into a small lane. At the end of the lane you will be able to visit the Morias watermill. Cross the bridge and turn left, you will soon come to the Chapel of St. Francis Xavier. At the end of the road continue on a path that goes through the farming fields flanked with stone columns. After crossing Estrada da Costa, continue on a narrow road with stone slabs called Caminho da Veiguinha where you will be able to see a water pump and irrigation pipes. Descend Caminho da Carvalhosa until you come to Largo da São João – here you can admire the chapel with the same name. Continue on Caminho do Areeira, cross Estrada da Costa and take a lane that heads towards the lowlands – Caminho da Cutarela. This lane will lead to a tunnel under the motorway, continue on the path that travels along the river bank until you find a Roman bridge known as Ponte do Arco. After crossing the bridge continue on the rugged path (mainly used for tractors) and take the second lane on your left. You will soon see the Picouto stone cross. From here take the path on the left, heading north, go through the tunnel under the motorway and after about 20 metres take the first lane on your right – this is a dirt path which will lead to the Chapel of Our Lady of the Olive Grove, located behind the village's football field. Continue on Caminho da Sra. do Olival until you come to Caminho Parente das Viúvas where you will find the parish church. Cross the front courtyard, turn left and after about 100 metres entre the playground of the old primary school, which gives access to the parish council building, where the trail ends.

This trail is located in the village of Perre, belonging to the Viana do Castelo region.

The starting point is next to the building that houses the Parish Council. Take the road running behind the "Associação Desportiva e Cultural" (Sports Centre) and climb in direction of the Monte do Calvário (Golgotha hill/Calvary), where you will be able to overlook and admire the picturesque village. Return to the road and continue in the direction of the parish church, cross the front courtyard and follow the road leading to Pisco. You will come upon the Chapel dedicated to the Stations of the Cross and the Chapel of Lady of Sorrows. Go past the small square with the stone cross and Caminho da Telhada and turn left into Caminho da Grifa where you will find the Chapel of Our Lady of the Immaculate Conception. Turn right and go along Travessa do Araújo and Travessa da Mina. Once you are on Caminho Cabine, keep walking and you will come to a large wooded area where you will find Quinta do Bento Novo (Rural Tourism Country House). Continue on this road until you come to Estrada do Pisco. Turn left and follow this road for about 50 metres and then turn into a cobble road that ascends, to your right - Travessa do Souto – continue until you get to Alto do Viso. When you reach the top of the hill you may visit the Bela Vista lookout point if you walk about 100 metres along the Calçada da Belavista. Coming back to the Alto do Viso, turn left (where you came from) and walk down the hill, then turn left into Calçada da Jaca. Continue until you come back to Estrada do Pisco. Take the first right, into Caminho das Portela, here you may admire an old "lavadouro" (where women came to wash their clothes). Turn left into Quelha da Nina where you may see Fonte da Nina (fountain). Turn right and walk until you get to Largo das Portelas, walk down Caminho das Fontes and go into Quelha do Licas, continue until you reach Caminho de Monção – here turn right. Keep on a dirt trail that leads into the farming fields – you will be able to find an old watermill. After crossing over the creek (ribeiro de Perre) turn left into a path with stone slabs, called Caminho da Rocha. Continue on this route that runs between several homes and turn left into Caminho João Mestre. Cross the bridge and admire the watermill with the same name. Go straight ahead, cross Estrada da Igreja and go along Caminho do Freixo until you come to an intersection where the trail crosses Trail PR16. Walk up Calçada do Castro where you may visit Capela de Nossa Senhor do Regate (Chapel of Our Lady of Ransom). When you get back to Estrada da Igreja, continue until you get to the starting point of this trail, thus the end of the trail.

