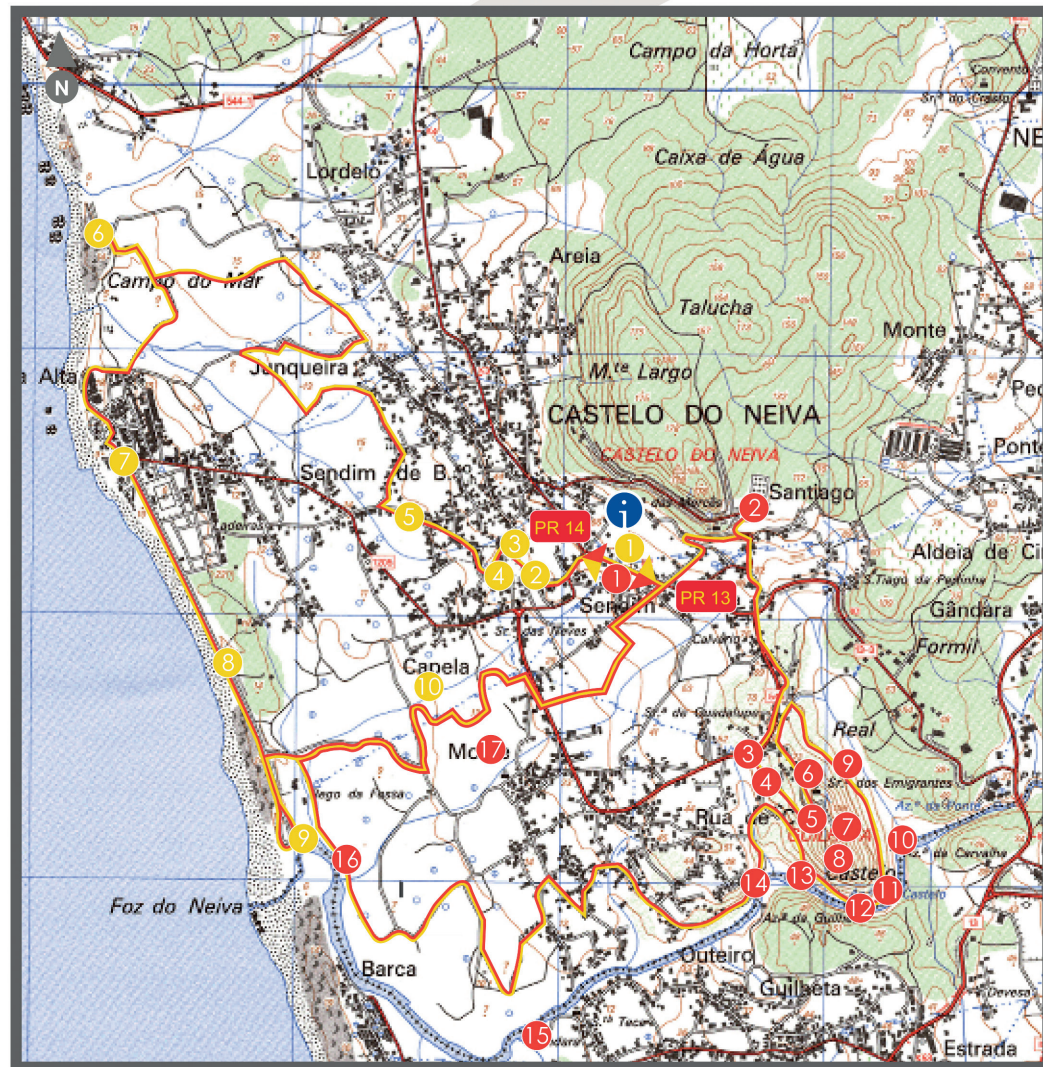




map of viana do castelo

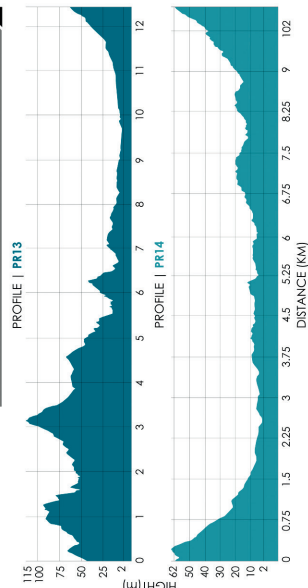
trail map in km



useful contacts

Câmara Municipal de Viana do Castelo > 258 809 300
Viana Welcome Center > 258098415
Unidade Local de Saúde do Alto Minho > 258 802 100
Bombeiros Municipais > 963 442 205 / 258 840 400
Bombeiros Voluntários > 258 800 840
GNR > 258 840 470
PSP > 258 809 880
SOS > 112
SOS Floresta > 117

profile graph / height/distance



information PR13 | PR14

Name of Trail
PR 13/ Castro de Moldes Trail
PR 14/ Palheiros do Sargaço Trail

Sponsoring Organization
Viana do Castelo City Council
Castelo do Neiva Parish Council

Trail System
Average Trail

Location
Castelo do Neiva Parish Council

Distance
PR 13/11.2 km | PR 14/10.2 km

Initial Level
58m

Maximum Level Reached
PR 13/ 112m | PR 14/ 64m

Minimum Level Reached
PR 13/ 0m | PR 14/ 1m

Time
PR 13/ 4h00m | PR 14/ 4h00m

Difficulty
Easy

Trail Type/Character
PR 13/ Archeology/Landscaped
PR 14/ Environmental/Cultural

Start Point/End Point
Castelo do Neiva Parish Council

Latitude: 41° 37' 25.36" N
Longitude: 08° 47' 41.89" W



Start Point/End Point

PR 13

- 1 Archeology museum
- 2 Paroquial Church
- 3 Srª da Guadalupe Square
- 4 Traces of Roman Construction
- 5 Castro de Moldes
- 6 Chapel of Nª Sª dos Emigrantes
- 7 Saint Nuno Alvaro Pereira Statue
- 8 Geodetic March and Cross - Medieval Castle
- 9 Winepress Excavated in The Rock
- 10 Watermill of Carvalha e Ponte
- 11 Watermill of Castelo
- 12 Watermill of Adriano
- 13 Watermill of Palhudo
- 14 Fishing of Guilheta and Sebastião Bridge
- 15 River Neiva
- 16 Mouth of River Neiva
- 17 Veiga - Crop Fields

PR 14

- 1 Sargaço Museum
- 2 Stand Pipe Mine
- 3 Milestone with Cross
- 4 Nª Sª da Boa Sorte Chapel, Shrines and Cross
- 5 Shrines
- 6 Hayloft of Sargaço
- 7 Fishing Port and Beach
- 8 Marginal - View Panoramic
- 9 River Neiva and Beach
- 10 Veiga - Crop Fields

ummm-viana-castelo.pt



trails of castelo do neiva
castro de moldes trail
palheiros do sargaço trail

trail mark



responsibilities

"The recommended walking trails do not exempt their users or those who promote them from taking the responsibility for any possible damage to property or personal injury which may occur when using the trails."

trail rules

- >Stay on the trail at all times – Pay attention and obey trail signs and markings.
- >Avoid making loud noises.
- >Respect Private Property.
- >Do not litter. Take all litter with you and place in rubbish bins.
- >Be careful with livestock. Do not disturb animals.
- >Preserve nature. Do not pick flowers, collect rocks or catch animals.
- >Avoid walking alone in the mountains.
- >Be careful when foggy.
- >Always use appropriate gear and clothing – hiking boots, a raincoat and a hat.
- >Do not make fire at any time.
- >Help preserve the trail.



SCALE | 1:20 000

The “Castro de Moldes” (Castro – a fortified settlement) trail is a short-distance walking trail (PR13), part of a network of walking trails in Viana do Castelo. These are marked trails with international symbols and each has been numbered by the municipality. Located in the coastal village of Castelo do Neiva, in the municipality of Viana do Castelo, this trail takes visitors through some incredibly scenic areas where you may admire the beauty of nature, cultural heritage sites and archaeological remains.

Set off from the Parish Council building (Junta de Freguesia) in Castelo de Neiva, where you may visit two small museums: one dedicated to sargassum (seaweed) and an archaeological museum, and walk in direction of the parish church. This church has existed since time immemorial. Inside visitors may admire an inscription from the high-medieval period and a medieval granite sarcophagus in the churchyard. Return to the trail and continue on Travessa de Santiago, a short stretch part of the Portuguese Coastal route of El Camino de Santiago (The Way of St. James), cross the municipal road in direction of the Largo (Square) and Chapel of N^o S^a de Guadalupe (Our Lady of Guadalupe). In Lugar de Moldes turn left into Rua das Azenhas towards the wooded area. You will come across some signs of an archaeological digging as you make your way up to the Castro de Moldes, a fortified settlement from the Iron Age which was subsumed by Roman culture. After exploring the Castro, walk up the path until you come to Quelha da Tapada and turn right in Rua Monte do Castelo. Continue to climb until you reach the top of the hill with the same name. Here you will find the Chapel of Nossa Senhora dos Emigrantes (a chapel dedicated to Our Lady to look over and protect immigrants) and a statue dedicated to immigrants. Climb up to the highest point. Next to a triangulation pillar, you may inspect the construction base of an ancient keep of a medieval castle. The castle was the centre of administration for the Land of Neiva, conquered by Nuno Alvares Pereira. A statute of this general may be found at the foot of hill next to a stone cross. Take in the magnificent panorama over the Neiva river, village and sea from the triangulation pillar. Climb down the hill once again by way of Rua Monte do Castelo, turn right at Avenida de Moldes and right again at Rua das Azenhas, continue until you reach the Neiva river. On the way you will be able to admire various watermills and a wine pressing basin cut in the rock which dates from the end of the Roman Empire, locally known as the Penedo das Chaves. In Rua do Giestal turn left and you will come to Ponte do Sebastião (Sebastian’s bridge) used by many pilgrims on their way to Santiago de Compostela. Next to the bridge is a granite basin used to hold fish. Leaving this idyllic spot, continue on Rua do Giestal and then turn left into Travessa da Lagoa and then right into Rua da Lagoa. Continue on this road for a few metres and then turn left into Rua do Rio Neiva and right again into Rua do Tojal. On this road you will soon come to the lowlands and you may admire the river. On the return trip the trail takes us through a small wooded area and continues through the fields until you come to the mouth of the Neiva river. Walkers will admire more farming fields on the return trip. Traditional methods of farming are still in practice in these areas. In fact in the past these fields were fertilized with seaweed. This practice has since been almost completely abandoned with the exception of one or two farmers who still maintain the tradition. When these fields are not cultivated, and depending on the season, carpets of wildflowers such as everlasting daises cover entire meadows. Cross Avenida de Moldes and we return to the starting point.

trail description PR14

The “Palheiros de Sargaço” (Seaweed Shacks) trail is a short-distance walking trail (PR14), part of a network of walking trails in Viana do Castelo. These are marked trails with international symbols and each has been numbered by the municipality. Located in the coastal village of Castelo do Neiva, in the municipality of Viana do Castelo, this trail takes visitors through some incredibly scenic areas where you may admire the beauty of nature, cultural heritage sites and archaeological remains.

Set off from the Parish Council building (Junta de Freguesia) in Castelo de Neiva, where you may visit two small museums: one dedicated to sargassum (seaweed) and an archaeological museum; walk towards the palheiros de sargaço (seaweed sheds). On the way through the village you will come across a fountain – Fontanário da Mina, continue on the cobble path and you will come to a small square – “Largo de N^o S^a da Boa Sorte” (Our Lady of Good Luck square). As you make your way round the square, you can admire a chapel, small stone shrines and a stone cross until you reach Rua do Lameiro, here too you will find various niches in the walls of the houses containing various deities. Continue on Rua de Sendim and then turn right into Rua dos Pedrões. The trail leads you through farming fields until you get to the seaweed sheds (Palheiros de sargaço) - small “constructions” built to stack and store dried seaweed. The covering is made from plant stalks (thatch) which are held down with granite or schist block weights, similar to what was used in the huts and community buildings found in castros (pre-roman hill forts). Return to the path and continue – you will get to a small fishing port – this is the Pedra Alta or Castelo de Neiva fishing port. Here you can contemplate the way of life of these maritime people and admire the colourfully painted fishing boats depicting various themes. Keep walking along the coastline and take in the beauty of the beach and sea until you come to the mouth of the river Neiva, an idyllic location and popular spot for many different types of birds. There were several salt basins dating back to the Middle Ages in the area. From here we return to the lowlands, where the trail leading back runs through farming fields once again. These traditional farming methods are still in practice today. In the past these fields were fertilized with seaweed. This practice has since been almost completely abandoned with the exception of one or two farmers who still maintain the tradition. When they are not cultivated, and depending on the season, carpets of wildflowers such as everlasting daises cover entire fields. Cross Avenida de Moldes and we return to the starting point.

