

Viana Loves YOU

JUNE | JULY | AUGUST
2018



FICA NO CORAÇÃO







Welcome

Viana do Castelo is a welcoming council, with quality touristic proposals, offering many activities focusing on satisfying the most diverse individual tastes, based on unique characteristics making it an unrivalled territory.

In order to get acquainted with Viana do Castelo, we are providing this and many other disclosing and communication tools of our cultural, touristic, religious and patrimonial added values as well as many other initiatives of ours. To familiarize yourselves with our heritage, an ensemble of routes and itineraries/trails are available. Therefore, if ever you were willing to enjoy our city, lots of quality events and experiences are accessible to you.

I can hereby guarantee to you that you will be warmly welcomed in Viana do Castelo. It's a real pleasure to welcome you in Viana do Castelo.

**Because those who like it,
visit and those who love it stay.
Viana lingers in the heart!**

The Town's Mayor
José Maria Costa

10

WAYS TO
EXPERIENCE
VIANA



1

MONUMENT

EIFFEL BRIDGE

The Eiffel Bridge hovering over Lima's river is one of Viana do Castelo most emblematic vision with 140 years old of existence. This structure is known as a Municipal Legacy hosting Minho's railway as well as the state way 13 over Lima's River, therefore connecting Viana city to Darque, a city located on the river left margin.

The Eiffel Bridge, from Gustave Eiffel office, is a symbol of iron-based architecture in Portugal, measuring around 645 meters long. It was considered back then as a monumental work. Composed of two gigantic metallic ramps, the upper one being for road traffic and pedestrian purposes, and the lower one hosting the railway with a 562 meters long and 8 meters wide extension.



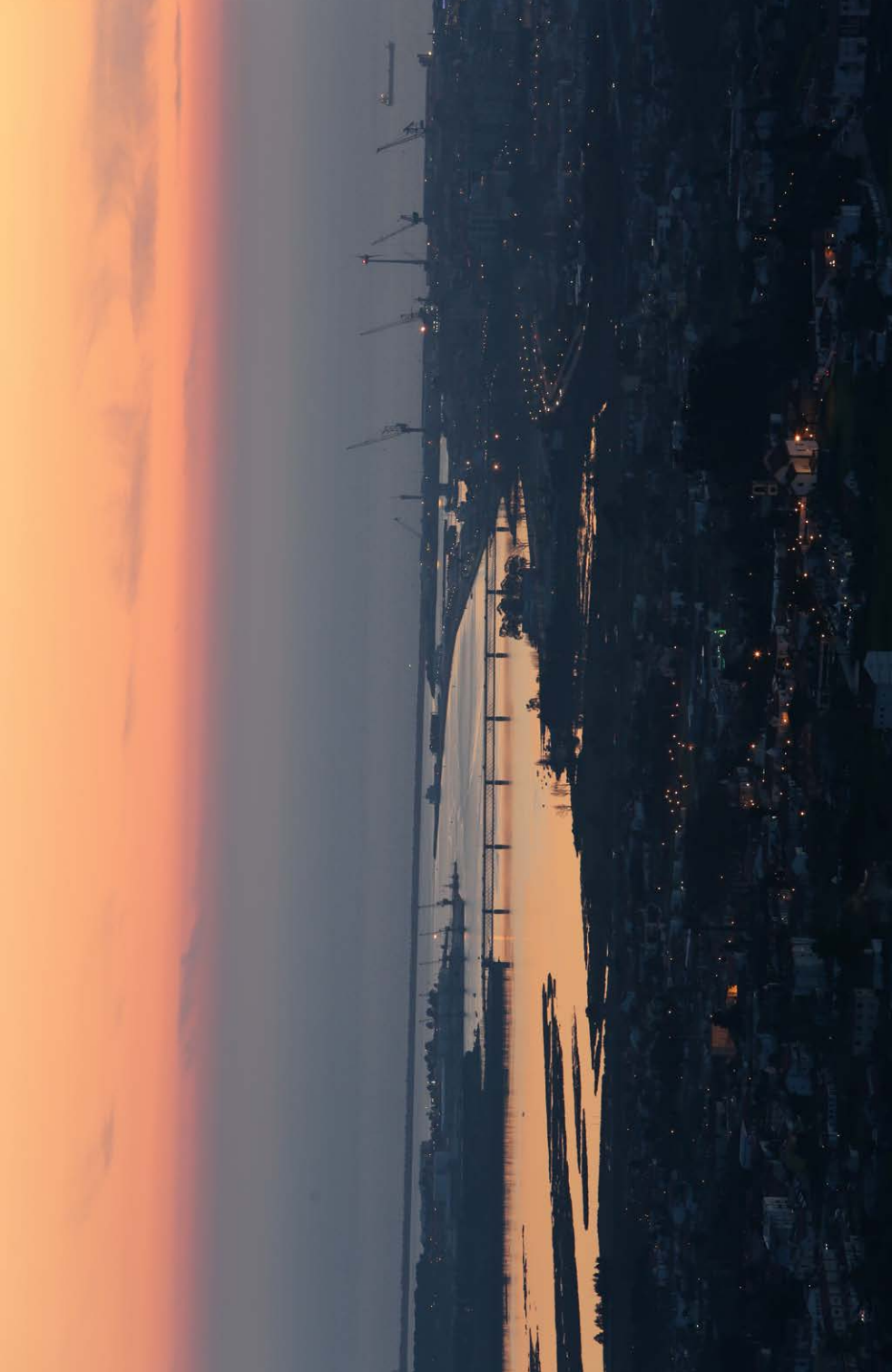
Inaugurated in 1878, the metallic bridge was designed by the Paris Eiffel House replacing a former wooden bridge that used to connect the “São Bento” yard to Lima’s river left margin, next to “São Lourenço” chapel, by “Darque” Parish Council.

In 2016 the Eiffel Bridge suffered works in order to fix the already existing masonry elements by the “Darque” access side (road-traffic ramp) as well as replacing the two pre-existing supporting structures by the road-traffic accesses on both River Lima’s margins.

Going back further in time, on July 21st 1852 a charter ordained work to be done focusing on improving the port and Viana do Castelo river mouth, as well as building a new bridge on Lima’s River, the ancient structure being in a relatively bad shape. In 1875, the bridge was meant to include two levels (metallic boards/

supporting structures), the inferior one hosting the railway. After many alterations and various theories, the project related to the new bridge revealed to be rather complex, needing more than two thousand tons of iron in order to achieve its construction.

The Gustave Eiffel Company was also commissioned to lead the construction part, under the supervision of the engineers “João Matos” and “Boaventura Vieira”. The work began in March 1877 and ended the following year in May. In June 30th 1878, the railway part between Darque and Caminha was inaugurated, the ceremony taking place inside Viana do Castelo temporary train station building. The aforementioned section entering its functioning phase during July the 1st 1878. ●



The tourist is offered a three-route trip amidst Viana do Castelo urban area, familiarizing himself with the “Azulejo”, integrated in half a millennium temporal outlook. Allegoric-ornamental “Azulejos”, utilitarian and educational, covering façades shaping slabs or “carpets/panels ceramic decorative tiling” in interior spaces; are the proposals the itinerary offers, therefore unveiling viana’s wonders.

On the “Azulejo” itinerary one might encounter “azulejos” (ceramic tiles) from the XVI, XVII and XVIII centuries, patterns of “separate figures” in historical compositions from the Mannerism and “Masters cycle” (First Baroque period), “Great Johannine Production” and Rococo; patterns of “high and half relief”, of “stamped/embossed” patterns with handmade painting and mechanical stamping; rectangular “bevelled azulejos”; friezes and revivalist / modern panels; compositions of new



2

ITINERARY

“AZULEJO”

TRADITIONAL CERAMIC TILE





techniques and aesthetic by the XXI century threshold.

The P1 and P2 itineraries include existing “azulejos” in Viana do Castelo Historical Centre, nowadays enclosed by the railway on the riverside until Lima’s river mouth: Parish council’s core areas of the Parish and “Monsserate”. Already the P3 route matches the area surrounding the Historical Centre, to the west, North and East.

This itinerary challenges tourists as well as viana’s inhabitants through an “azulejo” related trip, to observe and value this secular and typically Portuguese form of art. The itinerary offers ancient ceramic tiling, modern and contemporary, erudite or straightforward, but always the result of Portuguese creativity, being individual or collective ●





3

STATUE

**TRIBUTE TO
THE “MINHO”
FOLKLORE**

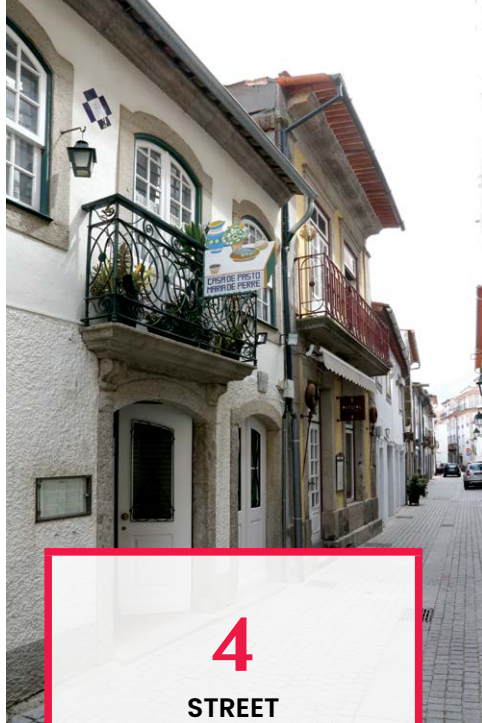
By one of the city’s entrances, in front of the Train Station main entrance, we can find a statue “full of tradition”, tribute to the “Minho” region Folklore. The statue was inaugurated during the year 2000, from the sculptor “Jaime Azinheira”; a 2.5 meters high statue picturing a couple dancing, wearing the traditional outfit from Viana.

The twirling skirt is an invite to dancing and movement in general. The sculpture is offering a pretty detailed vision of the feminine traditional costume; from the twirling skirt, to the petticoats, apron and the scarf worn on the head. The dance is called “vira minhoto” (a traditional folkloric dance), a contagious and enthusiastic dance for everybody to listen and witness.

At the statue base, lays written an invitation: “Hei-de voltar a Viana” (I will eventually come back to viana), a true pledge of love, with Viana do Castelo presenting itself as a passionate city •



The “Rua de Viana” (Viana Street), is one of Viana do Castelo most ancient street. It begins by the city’s main artery to the “Combatentes da Grande Guerra” Avenue (World War One veterans Avenue), then ending to the “Prior do Crato” street. Located by the former docks of Viana; the “Cais de Viana” street, is nowadays going by the same name “Cais de Viana” (Viana docks). By the same artery is situated the “Casa dos Nichos” (House of Niches/Alcoves), a building dating back to the XV century, that was actually renovated and rehabilitated by the Municipality in order to welcome an exposition area dedicated to archaeological heritage from the council. The aforementioned building is actually highlighting the prehistoric period, Iron Age as well as Romanization. Based on a strong educational angle, the visitors willing to get acquainted with the “Casa dos Nichos”, will be provided with the opportunity to enjoy the council’s history through diverse multimedia tools, therefore accessing to information such as the one related to the romanized fortified city remains of Santa Luzia “Citânia de Santa Luzia”, as well as, medieval sepulchral tombs belonging to “Geraz do Lima” region, or even the rupestrial paintings/engravings from “Carreço” Region ●



4
STREET
“RUA DE VIANA”





5

BEACH

“PRAIA NORTE”

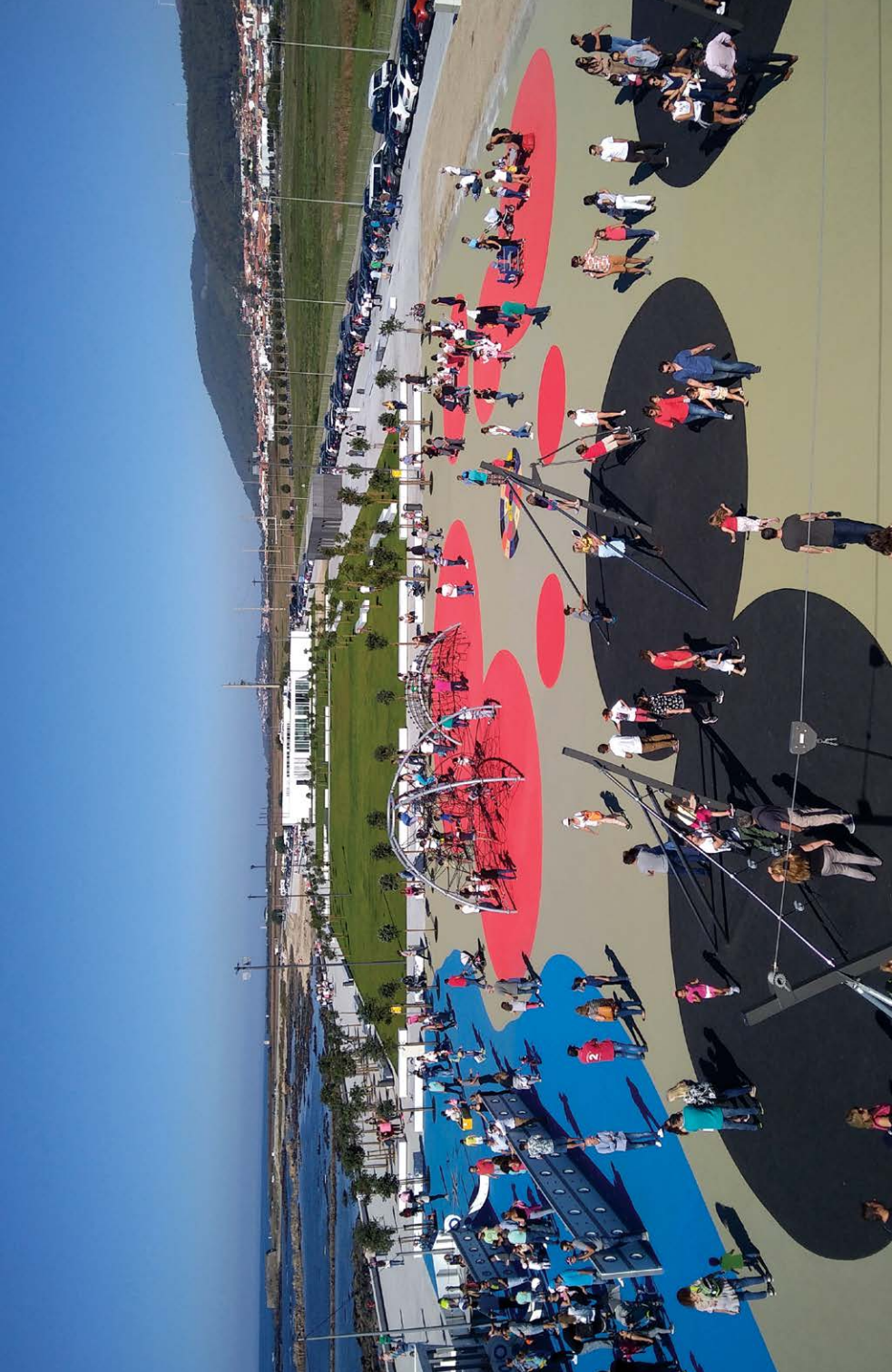
The “Praia Norte” is an urban integrated beach providing extensive pedestrian, leisure and conviviality dedicated areas, as well as sports related spaces, coffee shops and terraces tempting whomever is wandering by, to make a stop and enjoy the sea view, its beach and boats arriving or departing from Viana do Castelo.

Lately, the beach was the target of a rather consequent rehabilitation work under the Coastal Preservation Program of People, Goods and its Maritime

Front; amounting to a budget of € 3.1 million euros. For Viana’s inhabitants as well as visitors, it became a brand new “Praia Norte”, offering theme based squares, trees and vegetation, modern facilities and a great children oriented park, tribute to the former Hospital-Ship the “Gil Eannes”, Viana do Castelo ex-LIBRIS.

The beach is regarded as a rather sensitive area, benefitting from its location uniqueness; it is the only coastal beach providing a typical pattern protected by brown algae (*Fucus vesiculosus*, *Fucus spiralis*, *Pelvetia canaliculata* and *Ascophyllum nodosum*) •







6

LANDSCAPE

SANTA LUZIA



The “Santa Luzia” mount, on top of which one can find the Sanctuary going by the same name, seems to genuinely bless the city. From the mountaintop, one can observe viana’s historical hull, Lima’s River, the estuary, marina, ancient buildings as well as modern architecture located by the city riverside. “Santa Luzia” monument-temple mesmerizes by its

imposing beauty, its religious value and by assuming itself as the perfect watchtower over Viana do Castelo City.

From the top we can observe an unforgettable river as well as never-ending sandy beaches, ideal spots for one versed into nautical activities (sports mainly), such as surfing, windsurfing, kitesurfing, sailing, rowing and canoeing.



In order to get to the top, “Santa Luzia” Funicular is the ideal proposal. Capable of Overcoming 160 meters of unevenness, in around six or seven minutes, the “Santa Luzia” funicular experience happens to be the longest nationwide, with about 650 meters long. By mid-2005, the equipment undertook a rehabilitation phase for €2.28 million euros, renovating the walls enclosing it and providing it with two modern railcars, each one offering a 25 people capacity (12 sited and 13 standing). The railcars allow to convey bicycles if ever needed facilitating the riders willing to practice the mountaintop trails surrounding the “Santa Luzia” area ●





7

MUSEUM

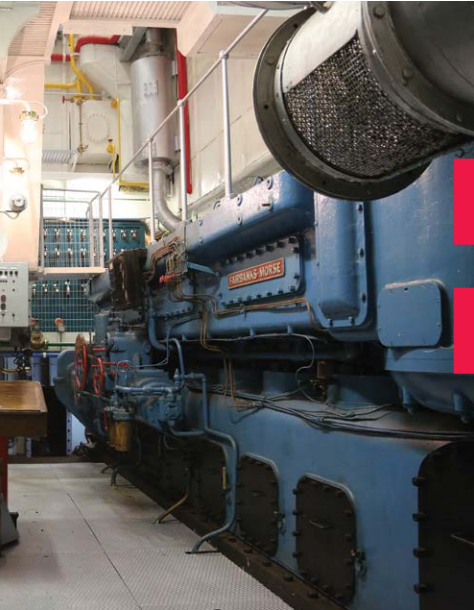
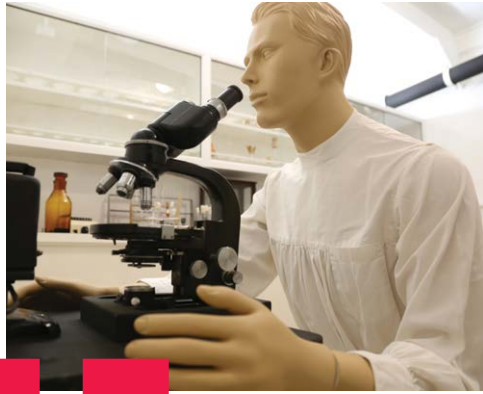
GIL EANNES SHIP

The Hospital Ship Gil Eannes, built in Viana do Castelo back in 1955, gave support during decades to the Portuguese Cod fishing fleet that used to operate by the Newfoundland and Greenland banks. Disabled, the cod fishing fleet, was left to rot in Lisbon's docks during many years. In 1998 the 31st of January, it was welcomed festively by Lima's river mouth, where, after being renovated was opened to the public in 1998 august the 19, enacting as one of Viana do Castelo main attraction centre.



Since the ship was docked by Viana do Castelo former commercial dock, the Gil Eannes foundation aimed to turn the ship into a museum, therefore contributing to cultural, touristic and scientific development, mainly in sea related matters.

Therefore along the years various renovating and rehabilitating endeavors took place, providing the visitors with diverse characteristic areas related to the ship, such as the navigating bridge, the engine room, the kitchen, bakery and various cabins like for example, the medical one and its practice, the treatment, radiology, operating and nurse rooms, allowing therefore the visitors to learn about the ship and the cod fishing fleet that used to roam the seas of Newfoundland and Greenland.





8

COSTUME

**VIANA'S
TRADITIONAL
OUTFIT**



As the biggest council symbol, Viana's traditional Outfit is the first Portuguese outfit to obtain accreditation. Viana do Castelo, known as the Folklore Capital, possesses a traditional outfit truly embodying Portuguese popular culture. Therefore, the municipality recently went forward and certified "Viana's traditional outfit", a well deserved reward gained by the end of 2016 in order to preserve and disclose it on a more regular basis.



Regarded as one of the most relevant council's cultural value, the traditional outfit is now accredited by a document, which is nothing less than a testament of "Viana's Traditional Outfit" characteristics, listing its entire criterion, name, historical and geographical guidelines as well as its characterization.



Viana do Castelo Traditional Outfit Museum was created back in 1997, fulfilling from then on the mission of studying and disclosing the identity and ethnographic heritage from Viana throughout its most relevant exponent, Viana's traditional outfit. When we refer to Viana's traditional outfit, we mean the feminine costume, popular, rural, used in villages surrounding Viana do Castelo; a garment that acquired along the years characteristics turning it easily recognizable and being worn since mid-19th until mid-20th century. The museum collection is composed mainly by an ensemble of popular rural costumes belonging to Viana do Castelo, such as the Sunday garments, the ones dedicated to festivities, work, bride and pity.





9

GARDEN
MARINA
GARDEN

The Marina Garden, by the city's riverside, is one leisure area that Viana's inhabitants practice the most. The Garden located between Lima's river and the Public Garden accounts with a vast green area, providing welcoming green grass enabling conviviality.

By Marina's Garden, one may also find a rather modern children oriented park, proposing age appropriate equipment to the younger ones, allowing them to play safely. For the older ones, an area close



by is equipped with diverse fitness equipment. For the more adventurous ones, this garden also provides a skating park.

In this garden, one can also find a stone made Amphitheatre that hosts throughout the year diverse initiatives from dancing, music, sports, amongst others ●





10

TASTING

MUNICIPAL MARKET



Viana do Castelo Municipal Market is opened from Monday to Saturday. During the week, the time schedule is: 7h30 to 19h00, but on Saturdays it is actually only opened from 7h30 to 13h00. Tuesdays and Fridays being the busiest days, the Market is surely the place of choice to purchase fresh products, going from fruit, vegetables, fish, and meat, amongst many others.

The Municipal Market is also a privileged space when it comes to purchase flowers, always colourful and full of scent; presenting the quality level the local traders accustomed us to.

The monthly fairs, each month last Saturday, are one of the most attractive point Viana's market has to offer. Providing a special program created thinking of families, the fairs offer a great diversity of activities for the youngest, such as the children oriented mini-market (between 4 and 12 years old), workshops and show cooking, amongst other things.



HIGHLIGHT
**POPULAR FESTIVITIES
HONOURING
OUR LADY OF AGONIA**
17 - 20 AUGUST

The popular festivities of Agonia is one of Viana do Castelo most valued event. Viana do Castelo inhabitants are beyond pride and vanity when it comes to their pilgrimage/popular festivities, affectionately dubbed Queen of Portugal popular festivities. This year, the party will occur between the 17th and 20th of August, uniting all the population exhibiting the council most traditional aspects.

The Agonia popular festivities is the maximum exponent on Viana's festivities calendar; majestic in diversity as well as in number of visitors, strength of tradition (Viana's traditional outfit), and the precious family gold women show off by wearing it on their chest.





The festivities history is intimately linked to the Agonia church. Back in 1674 the church history honouring the fishermen patron saint. Back then, a chapel was erected in invocation of “Bom Jesus” (Good Jesus) from the “Santo Sepulcro Calvário” (Calvary Sacred Sepulchre) and, a little bit higher, a small chapel devoted to “Nossa Senhora da Conceição” (Our Lady of Conception).

Nowadays, the Saint’s name is associated to the “Queen of festivities” and its multiple traditions belonging to Portugal biggest popular party. It originated in 1772 rooted into sea folk’s devotion coming from Galicia and all over the Portuguese coast in order to attend the religious and pagan celebrations that still nowadays take place once a year during the 20th of august week, being a Municipal holiday.





The sea procession and the riverside streets, adorned with flowered carpets, are proof of the profound religious devotion that gave birth to the popular festivities of Agonia. The ethnographic element has its place into the Christian stewardship parade, with hundreds of women parading wearing their traditional garments and part of the Historical and Ethnographic oriented procession and the unparalleled traditional festive outfit. Between the drums and accordions,

outfits and gold, the riverside folks, the historical procession, the solemn one, the unmatched serenade of fireworks; the Agonia popular festivities that actually were rewarded in 2013 by the Tourism Relevance Declaration; really nobody is left indifferent.

The pilgrimage/festivities happen to be the biggest council's event as well as one of the best reason to cherish Viana do Castelo.





10

WAYS
TO FEEL
VIANA



1
XI
MEDIEVAL
FAIR
15 - 18 JUNE

Every year, around June, Viana do Castelo embarks on a true journey throughout time to the medieval era. All the city takes on the challenge, businesses decorate themselves accordingly in order to bring a feel of the medieval era all around the city.



The XI Viana do Castelo Medieval Fair takes place this year between the 15th and 18th of June. Four days of fair during which artisans, merchants, river traders and gimmicks, coming from the most diverse places, will surely transfigure the city's historical hull, turning it into a privileged place of meetings, business, leisure, drinking and eating related activities.





This space intends to be leisure oriented, providing animation and conviviality, created keeping in mind the will to familiarize the public (inhabitants as well as visitors) with traditions and culture linked to the medieval era. The fair will therefore depict local or regional events based on archives documents or other elements belonging to local history.

History and animation, gathered in one event engaging Viana do Castelo and its enthused inhabitants!







2

BOOK FAIR

7 - 22 JULY

In plain Summer, the Book Fair is surely a compelling proposal to whomever claims to love books. Viana do Castelo 38 edition Book Fair will take place by the public garden, from July 7th to 22th. During its two weeks duration, the initiative encompasses around 70 events, directed to the most diverse public of any age range.



Inside the organization of Viana do Castelo Town Hall as well as the Minho Cultural centre, the fair's program includes the presence of various attending editors that will provide the public of viana with the opportunity to browse through recent publishing material. Lots of children oriented animation; and beyond expositions, music, theatre and dancing; workshops and ateliers, as well as the usual book presentation and signing sessions. The "Tale Time" (Hora do conto), that always takes place, at 17h30, inside an improvised storytelling space, in plain garden, is very renowned and crowded, during shared moments of culture that never fail to rejoice the young ones. The "Tenda da Pequenada" (a tent dedicated to the smaller ones) is guaranteeing entertainment for the younger ones over the night.



The Book Fair presents itself as one of the council's most important cultural event, happening for two consecutive weeks, with sustained and varied animation •



3

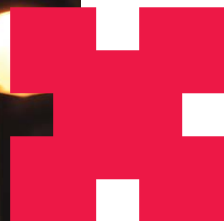
JAZZ FESTIVAL BY THE "PRAÇA DA ERVA" SQUARE



The Jazz Festival by the "Praça da Erva" Square is one of the most successful summer events in Viana do Castelo. Taking place since 1991 in the same beautiful space that saw it emerge, the "Praça da Erva" Square. This festival is a prestigious part of the national and peninsular jazz panorama. On this festival stage already went by, the most prestigious jazz musicians, but also new projects, which made themselves known as being part of a high quality event.



From the beginning, the jazz festival occurring by the "Praça da Erva" Square is organized by Viana do Castelo Municipality, aided by public and private supports, coupling renowned artists to new and promising talents, yet betting on the local musicians •





From the 5th to 10th of June, Cabedelo Beach is staging a worldwide kitesurf event organized in partnership between the municipality, the Feelviana Sport Hotel and the GKA – Global Kite sports Association. The excellent conditions provided by the city and beach were actually the reason why it was chosen to host the event, therefore “Cabedelo” beach will welcome a six days competition.

The world championship will be composed of two disciplines, wave and freestyle strapless, and will gather tens of athletes from 25 different nationalities into one event that will be broadcasted by more than 120 T.V. Channels all over the world, in a unique media coverage ●

4
KITESURF WORLD
CHAMPIONSHIP
5 - 10 JUNE





5
WINDSURF
WORLD
CHAMPIONSHIP
14 - 24 JUNE

Cabedelo Beach will host, in June, the PWA Grand Slam, the biggest windsurf related event of its kind worldwide taking place in 2018. For the 1st time in Portugal, the event will take place between the 14th to the 24th of June, for a ten days long competition, composed of three distinct disciplines: slalom, freestyle and wave. The international competition will welcome 200 athletes of 35 different nationalities, benefitting from the excellent conditions offered by the beach and the famous northern winds.



Included into the Windsurf world Circuit, it is an initiative organized by the Viana do castelo Town Hall as well as Feel Viana Sport Hotel, supported by the Windsurf Portuguese Association (APWind) and PWA (Professional Windsurfers Association) ●



The Wine & Blues festival will repeat itself for the third time; its third edition will offer a 3 days long program. From 12 to 14 of July, the event will take place by the “Praça da República” (Republic square) and will propose music as well as wine tasting (with various wine producers), free of charge.

The event aims to commemorate the “vinho verde” (green wine typical from the northern region of Portugal), mixing good music with an indigenous quality product. This is one more bet that the Municipality took in order to enrich our summer nights with melody and locally produced beverages willing to disclose and preserve the “Green Wine” production.



In its third edition, the Wine & Blues festival will host national and international music bands. On July 12, Rob Stone & The Boogiers from the United states of America. The following day, also coming from the USA, the Circular Time, followed by a Spanish band, the Contra Blues. On the last day, the Portuguese, The Ramblers will open the night that will end by another Spanish ensemble, Emma Fernandez Band. During the 13 and 14 of July will also perform the Portuguese, Aline acoustic providing the public with non-stop entertainment •

6

WINE & BLUES

12 - 14 JULHO



Carlsberg

Official Beer



DOGHOUSE SAM &
HIS MAGNATONES

Wine & Blues
FESTIVAL





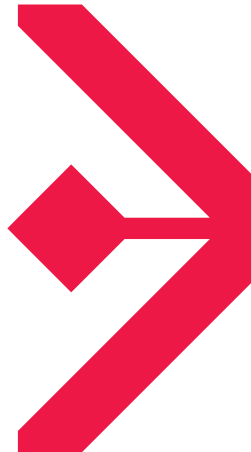
7

**ALTO MINHO XXII
INTERNATIONAL
FOLKLORE FESTIVAL**

16 - 22 JULY

Viana do Castelo welcomes the Alto Minho XXII International Folklore Festival from the 16 to the 22 of July 2018, organized between “Viana Festas” (an organization in charge of party related events) as well as an executive commission gathering various folkloric bands from Viana’s council. The International Folklore Festival began back in 1996, bringing to Viana do Castelo stages folkloric groups from all over the world

As usual, the festival will take place on diverse stages, offering to the public the best there is when it comes to traditional art and taking it to various part of the council. The main axis being the “Praça da República” (Republic square) of Viana do Castelo, filling itself with inhabitants, tourists, aficionados and mere curious enjoying the variety of diversion provided by the participating groups.





Acknowledged by the CI-OFF – The Traditional Arts and Folkloric Festivals International Council since 2006, this festival welcomed groups from various countries all over the world and achieved a strong viable structure allowing it to gain credibility, putting Viana do Castelo on the map amongst the most renowned International Folkloric Festivals from Europe •





8

**AGONIA POPULAR
CRAFTSMANSHIP FAIR**

4 - 21 AUGUST

Our Lady of Agonia Popular Craftsmanship Fair is under the management of “Viana Festas” organization – Viana do Castelo Festivities Promoting Association in collaboration with Our Lady of Agonia Festivities Commission and MAOS – Movement of Arts and Workmanship, Promoting association. Taking place on August, before the Agonia Popular Festivities period, up until the end of the festivities, willing to promote and disclose artisanship in its diverse typologies.





The Fair already secular is, as usual hosted by the Public Garden of Viana do Castelo, entirely filled up with stands offering the best artisanship has to offer. This year, the event will take place between the 4 and 21 of august, covering almost totally the municipal garden area with products for all tastes and ages. The Fair is divided between local, national artisanship and gastronomy, also exhibiting live workshops from local artisans ●



The NEOPOP festival is the most respected electronic music festival in Portugal. It takes place in Viana do Castelo during August, with the sea as its background. Always during the summer the festival merges the best of techno music world to the natural wonders “Lima’s Princess” (Viana) has to offer.

This year, the Neopop Festival will occur for its 14th edition and from August 9 to 11, promising one of the most ambitious programs ever. The organizing party invested in new areas from the precinct as well as a number of artistic activities that will take place a week before the actual event.

Names such as Jeff Mills, Ben Klock, Joseph Capriati, Solomun, Nastia, Solar, Apollonia, Adriatique, Zadig, Lewis Fautzi, Trikk, Ludovic Navarre (St Germain) will definitely fill up the festival connecting the riverside city to electronic music from all over the world.

The global Pass is for sale for € 105,00 euros from June 1 to July 31, and for €120,00 euros from August 1 •

9

NEOPOP
9 - 11 AUGUST





10

BODYBOARD WORLD CHAMPIONSHIP

23 - 25 SEPTEMBER

The Viana Body board World Championship once again returns to “Arda” between the 23rd and 25th of September. The past years stages in Viana’s waters have truly been successful, offering to the public the body board world very best.

In this championship, more than 60 athletes from, Portugal, France, Spain, Brazil, Australia, South Africa, Chile, Argentina, Peru, USA – Hawaii, Morocco and England will be attending. The body board world championship is a classic that keeps on repeating itself for 22 years now, since 1994, when, it took a turn with Viana Surfing club for the 1st time in its history, allowing the body board completion to take place out of Hawaii in Viana’s waters ●

**VIANA WELCOME CENTRE
- TOURISM OFFICE**

Rotunda da Liberdade
T (+351) 258 098 415

**"SANTA LUZIA" FUNICULAR**

T (+351) 961 773 164

**TRANSPORT INTERFACE**

T (+351) 258 809 361

RAILWAY

Av. Combatentes G. Guerra
T (+351) 707 210 220

**FERRY BOAT**

Margem Rio Lima
T (+351) 962 305 595

SOS

T 112 T

**PSP (POLICE IN CHARGE OF PUBLIC SAFETY)**

Rua de Aveiro
T (+351) 258 809 880

**GNR (REPUBLICAN NATIONAL GUARD
/ A MILITARY FORCE IN CHARGE OF PUBLIC SAFETY)**

Rua de Monserrate, 100
T (+351) 258 840 470

**MARITIME POLICE**

Largo do Marquês
T (+351) 258 070 571

**"ALTO MINHO" LOCAL HEALTH UNIT**

Est. de Santa Luzia
T (+351) 258 802 100

HEALTH CENTRE

Rua Nova de Santana
T (+351) 258 806 880

RED CROSS

Av. Combatentes G. Guerra
T (+351) 258 821 821

PRIVATE HOSPITAL

Rua de S. João
T (+351) 258 808 030

TOURIST HELPLINE

T (+351) 808 781 212

FIRE HAZARD – FOREST PROTECTION

T 117

**MUNICIPAL FIREMEN**

Rua de S. Vicente
T (+351) 258 840 400

**VOLUNTARY FIREMEN**

Rua dos Bombeiros
T (+351) 258 800 840

TRAIN STATION



TAXI



FUNICULAR



PARK



PHARMACY



POST OFFICE





MUSEUMS CULTURAL SPACES AND MUSEUM NUCLEUS

- 1 DECORATIVE ARTS MUSEUM**
Largo de S. Domingos, Viana do Castelo
GPS 41°41'30.4"N 8°50'00.3"W
T (+351) 258 809 305
E mad3@cm-viana-castelo.pt
- 2 "TRAJE" (TRADITIONAL OUTFIT) MUSEUM**
Praça da República, Viana do Castelo
GPS 41°41'34.4"N 8°49'43.2"W
T (+351) 258 809 306
E museutraje@cm-viana-castelo.pt
- 3 "CASA DOS NICHOS" (HOUSE OF NICHES)
- ARCHAEOLOGICAL MUSEUM NUCLEUS**
Rua de Viana, Viana do Castelo
GPS 41°41'30.5"N 8°49'40.8"W
T (+351) 258 809 359
E casadosnichos@cm-viana-castelo.pt
- 4 "CMIA" (CENTRE OF MONITORING
& ENVIRONMENTAL INTERPRETATION)**
Azenhas D. Prior, Meadela, Viana do Castelo
GPS 41°41'49.2"N 8°49'05.2"W
T (+351) 258 809 362
E cmia@cm-viana-castelo.pt
- 5 "GIL EANNES" HOSPITAL SHIP**
Antiga Docca Comercial, Viana do Castelo
GPS 41°41'25.3"N 8°49'49.0"W
T (+351) 258 809 710
E geral@fundacaogileannes.pt
- 6 SEA CENTRE**
Antiga Docca Comercial, Viana do Castelo
GPS 41°41'25.3"N 8°49'49.0"W
T (+351) 258 809 303
E centrodemar@cm-viana-castelo.pt
- 7 ARCHAEOLOGICAL MUSEUM NUCLEUS
- "IGREJA DAS ALMAS" (CHURCH)**
Largo das Almas, Viana do Castelo
Monday to Friday, from 09h30 to 12h30
Guided tours by previously booking.
GPS 41°41'40.6"N 8°49'30.7"W
T (+351) 258 809 337
E arqueologia@cm-viana-castelo.pt
- 8 "CITÂNIA DE SANTA LUZIA"
(ROMANIZED FORTIFIED VILLAGE)**
Monte de Santa Luzia, Viana do Castelo
GPS 41°42'19.5"N 8°50'07.4"W
T (+351) 258 825 917
E citania@culturalnorte.gov.pt
- 9 CULTURAL CENTRE**
Praça Marques Júnior, Viana do Castelo
GPS 41°41'25.6"N 8°49'43.9"W
T (+351) 258 809 351
E dcm@cm-viana-castelo.pt
- 10 "SÁ DE MIRANDA" MUNICIPAL THEATRE**
Rua Sá de Miranda, Viana do Castelo
GPS 41°41'45.2"N 8°49'43.9"W
T (+351) 258 809 382
E tmsm@cm-viana-castelo.pt
- 11 MUNICIPAL LIBRARY**
Alameda 5 de Outubro, Viana do Castelo
GPS 41°41'33.0"N 8°49'36.3"W
T (+351) 258 809 340
E biblioteca@cm-viana-castelo.pt
- 12 CHOCOLATE FACTORY MUSEUM**
Rua do Gontim, 70-76, Viana do Castelo
GPS 41°41'44.0"N 8°49'24.5"W
T (+351) 258 244 000
E reservas@fabricadochocolate.com
- TRANSPORTS MUSEUM AND
MUSEUM OF TRADITIONAL OUTFITS**
Santoinho, Darque - Viana do Castelo
GPS 41°40'37.2"N 8°47'02.8"W
T (+351) 258 322 159 / 962 079 540
E santoinho@avic.pt
- "MONTARIA" WATERMILLS**
S. Lourenço da Montaria, Viana do Castelo
GPS 41°47'39.0"N 8°43'42.2"W
T (+351) 258 809 306 / 965 200 861 / 965 341 967
E museutraje@cm-viana-castelo.pt
- BREAD & "OUTEIRO" WATERMILL
MUSEUM NUCLEUS**
Antiga Escola Primária de Outeiro
Outeiro, Viana do Castelo
GPS 41°45'00.6"N 8°46'53.1"W
T (+351) 258 809 306
E museutraje@cm-viana-castelo.pt
- "MONTEADOR" WINDMILLS MUSEUM NUCLEUS**
Lugar de Montedor
Carreço, Viana do Castelo
GPS 41°45'01.3"N 8°52'15.8"W
T (+351) 258 809 306
E museutraje@cm-viana-castelo.pt

"CARREÇO" AGRO-MARITIME MUSEUM NUCLEUS

Sede da Junta de Freguesia de Carreço,
Viana do Castelo

GPS 41°44'58.6"N 8°51'54.1"W

T (+351) 258 835 185

E jfcarreco@sapo.pt

"LANHESES" MUSEUM NUCLEUS

Edifício da Junta de Freguesia de Lanheses
Viana do Castelo

T (+351) 258 733280

E jflanheses@mail.telepac.pt

"CASTELO DO NEIVA" SARGASSUM MUSEUM NUCLEUS

Centro Cívico de Castelo do Neiva,
Viana do Castelo

GPS 41°37'26.4"N 8°47'41.9"W

T (+351) 258 028 256

E museutraje@cm-viana-castelo.pt

MUSEUM NUCLEUS OF "DARQUE" POPULAR ARCHITECTURE

Casa das Artes
Avenida Rocha Páris, Darque, Viana do Castelo

T (+351) 258 809 306

E museutraje@cm-viana-castelo.pt

"SANTA MARIA DE GERAZ DO LIMA" ARCHAEOLOGICAL MUSEUM NUCLEUS

Igreja Paroquial de Sta. Maria de Geraz do Lima,
Viana do Castelo

Guided tours by previously booking

GPS 41°42'13.1"N 8°40'14.3"W

T (+351) 258 731794

E arqueologia@cm-viana-castelo-pt

ARCHAEOLOGY MUSEUM NUCLEUS – "CASTELO DO NEIVA"

Centro Cívico de Castelo do Neiva,
Viana do Castelo

Guided tours by previously booking

GPS 41°37'26.3"N 8°47'42.0"W

T (+351) 258 028 256

E arqueologia@cm-viana-castelo.pt

E geral@jf-castelodoneiva.com

"AFIFE" ARCHAEOLOGY MUSEUM NUCLEUS

Casino Afifense, Afife

Viana do Castelo

Visiting by booking

GPS 41°46'33.0"N 8°51'38.1"W

T (+351) 967 061 751 / 966 121 444

E naaarqueologia@gmail.com

"CASTRO DE VIEITO" INTERPRETATION CENTRE – PERRE

Antiga Escola das Portelas, Perre

Viana do Castelo

T (+351) 258 809 337

E arqueologia@cm-viana-castelo.pt



VIANA DO CASTELO COUNCIL RESTAURANTS

VIANA DO CASTELO

ADEGA DO PADRINHO

Rua Gago Coutinho, 162

T (+351) 258 826 954

A GRUTA

Rua Grande, 87 – 89

T (+351) 963 953 121

A LAVRADEIRA

Jardim D. Fernando, 93

T (+351) 258 113 415

A MESA DO XICO

Rua Cidade de Riom, 432

T (+351) 258 829 187

ASTÚRIAS

Av. Alves Cerqueira, 21

T (+351) 258 823 814

ÁTRIO

Rua da Gramática, 77

T (+351) 258 823 944

AXIS VIANA

Av. Cap. Gaspar de Castro

T (+351) 258 802 000

BAMOS Ó MENDES

Rua Prior Crato 52

T (+351) 258 024 643

BANDEIRA

Rua da Bandeira, 13/15

T (+351) 258 822 794

BAR MONTANHA

Monte de Sta. Luzia

T (+351) 258 821 307

BOCCALINO

Rua de Sto. António, 120, R/C Esq.

T (+351) 258 829 567

BRASEIRO DO CAMPO

Campo do Castelo, 11

T (+351) 258 825 282

CAFÉ PARIS

Av. Combatentes, nº 43-53

T (+351) 258 829 370

CAMELO

Estação Viana Shopping, loja2056
T (+351) 258 100 073

CAPRI

Pç. General Barbosa, 112
T (+351)258 826 790

CASA D'ARMAS

Lg 5 de Outubro, 30
T (+351) 258 824 999

CASA DE PASTO BOA VISTA

Rua do Poço, 11
T (+351) 919 128 513

CASA DE PASTO VIDEIRA

Pr General Barbosa, 90
T (+351) 258 826 808

CASA ESTRELA

Rua Mateus Barbosa,60
T (+351) 258 024 668

CASA PRIMAVERA

Rua Gois Pinto
T (+351) 258 821 807

CASTELO VELHO

Rua João Alves Cerqueira
T (+351) 969 752 549

CERQUEIRA'S

Praça da Liberdade, Loja A8
T (+351) 968 196 520

CHURRASCARIA ALTAMIRA

Rua de Altamira, 47-49
T (+351) 936 302 386

CHURRASQUEIRA S. JORGE

R. Aquilino Ribeiro, 47, Fração A
T (+351) 258 820 287

COLOMBO

Rua de Monserrate, 219
T (+351) 258 820 201

COSTA VERDE

Rua de Monserrate, 411
T (+351) 258 829 240

COVAS

Rua Prior do Crato, 41
T (+351) 258 828 376

COZINHA DE TACHO

Estação Viana shopping - Piso 2
T (+351) 926 692 518

COZINHA DO RICARDO

Rua do Loureiro, 19
T (+351) 258 826 036

COZINHA DAS MALHEIRAS

Rua Gago Coutinho, 19
T (+351) 258 092 200

DIPLOMÁTICO

Av. Rocha Páris, 202
T (+351) 258 825 656

DUQUE NA PRAIA

Travessa da Vitória, 15
T (+351) 258 094 560

EXPRESSO

Largo S. Domingos, 24
T (+351) 966 866 226

FATSA KEBAB

Estação Viana Shopping
T (+351) 962 885 327

FILIPE

Rua da Bandeira, 50A
T (+351) 927 838 908

FONTES

Largo Vasco da Gama, 62
T (+351) 258 408 131

FOZ DO LIMA

Rua dos Poveiros
T (+351) 258 829 232

FOZ VIANA

Praça da Liberdade
T (+351) 258 808 060

GAGO COUTINHO

Rua Gago Coutinho, 146
T (+351) 258 104 188

GALERA

Av. Conde da Carreira, 42
T (+351) 258 824 763

GRANDE MURALHA

Av. Alves Cerqueira, 8-10
T (+351) 258 820 969

HEBE GYROS

Estação Viana Shopping
T (+351) 258 093 455

HOTEL DO CAIS

Tv. da Escola de Darque
T (+351) 258 331 031

H. FÁBRICA DE CHOCOLATE

Rua do Gontim, 70-76
T (+351) 258 244 000

IATE CLUB BAR

Marina
T (+351) 258 820 535

IN FRANCESINHAS

Travessa da Vitória, 1
T (+351) 965 000 653

INDIAN PUNJABI

R. Frei Bartolomeu
Mártires, 179
T (+351) 258 113 448

ISABELINHA

Estrada da Papanata, 513
T (+351) 258 811 497

KAMY SNACK-BAR

Rua de Viana, 74
T (+351) 258 820 286

LA BIGOUDÈNE

Rua Prior do Crato, 68
T (+351) 912 611 836

MAGMA CAFÉ II

Av.25 de Abril, Encosta do
Elevador,50-2º B
T (+351) 258 817 707

MAR ABERTO

Ed. Centro de Vela
T (+351) 258 070 693

MARGARIDA DA PRAÇA

Largo 5 de Outubro, 58
T (+351) 258 809 630

MARIA DE PERRE

Rua de Viana, 118
T (+351) 258 822 410

MARQUÊS

Rua do Marquês,72
T (+351) 258 828 069

MERCADO NA LOJA

R.Ant. Machado V.Boas
T (+351) 258 109 343

NÁUTICO

Praça da Galiza
T (+351) 258 822 330

O CAMBÃO TABERNA

R Major Xavier da Costa, 37-41
T (+351) 969 173 168

OCEANO

P. Mordomas da Romaria, 3A
T (+351) 258 822 622

O GARFO

Largo 5 de outubro, 28
T (+351) 258 829 415

O GRELHADOR

Rua do Anjinho, 19
T (+351) 258 825 219

O LARANJEIRA

R. Manuel Espregueira, 24
T (+351) 258 822 258

O LAMPIÃO

Rua de Monserrate, 42
T (+351) 258 822 377

O MANEL

Praça da Liberdade, A2-A4
T (+351) 258 845 320

OS CASTREJOS

Rua Grande, 73
T (+351) 963 062 529

O PESCADOR

Lg S. Domingos, 35
T (+351) 258 826 039

O PINGAS

Rua da Bandeira, 812, Loja A
T (+351) 935 955 648

O TABERNÃO

Lg Infante D. Henrique, 42
T (+351) 258 832 463

O TABUINHAS

Rua Grande, 79
T (+351) 258 823 290

OS TRÊS POTES

Beco dos Fornos, 7
T (+351) 258 829 928

O VASCO

Rua Grande, 21
T (+351) 258 824 665

PAPANATA (SOPRO DE ESTRELAS)

Estr. Papanata, 469 R/C Esq
T (+351) 258 402 300

PIZZARIA DOLCE VIANNA

Rua do Poço, 44
T (+351) 258 824 860

PIZZARIA VALENTINO

P. Alto Minho, Active Center LojaX
T (+351) 258 813 407

PORTA 93@ MELOALVIM

Avenida Conde da Carreira, 28
T (+351) 910 776 694

PORTAS DA RIBEIRA

R Mons Daniel Machado
T (+351) 258 820 749

POUSADA M. STA LUZIA

Monte de St Luzia
T (+351) 258 800 370

PRAIA DO CORAL

Praça deTimor, 59
T (+351) 258 847 176

PRONTO COME VERDE

R Frei Bartol. Mártires,175-177
T (+351) 967 590 067

RALENTI

Av. Afonso III, 180
T (+351) 258 829 770

RESERVA PETISCOS E IBÉRICOS

Rua da Palha, 8
T (+351) 258 409 444

RITUAL

Rua de Viana, 114
T (+351) 258 119 453

SALEIRO

Av. de Cabo Verde, 100
T (+351) 258 800 100

SANTOS

Rua dos Poveiros, 48
T (+351) 258 820 749

SCALA CAFÉ

Av. do Atlântico
T (+351) 258 836 600

SR. BIFE

Praça da Liberdade, loja A 5
T (+351) 965 319 300

SONHO DO PADRINHO

Lg João Tomas da Costa, 42
T (+351) 258 824 560

SPORT

Rua dos Manjovos, 8-10
T (+351) 258 822 117

STEAK HOUSE

Praça da Liberdade, Lj. A9
T (+351) 963 242 282

TABERNA DO VALENTIM

R. Mons. Daniel Machado
T (+351) 258 827 505

TABERNA DO VALENTIM GRILL

Campo do Castelo
T (+351) 258 827 505

TASCA DENTRO

Largo JoãoTomás Costa, 25
T (+351) 258 821 129

TASQUINHA DA LINDA

Rua dos Mareantes, A-10
T (+351) 258 847 900

TASQUINHA DA PRAÇA

Praça da Liberdade, LjA6
T (+351) 258 823 361

TRIÂNGULO

Rua do Manjovos, 14-16
T (+351) 258 824 763

UNIVERSO

Lg JoaoTomás da Costa
T (+351) 258 822 384

VARANDA DO SOL

Avenida do Atlântico, 405
T (+351) 258 827 720

VARANDAS

Rua de Olivença, 109
T (+351) 258 822 184

VERDE MINHO

Rua do Anjinho, 34-36
T (+351) 258 822 386

VIANA MAR

Av dos Combatentes
T (+351) 258 823 032

VIANA REMO

Rua Dr. Adriano Magalhães
T (+351) 258 823 048

ZEFA CARQUEIJA

Av. Campo do Castelo
T (+351) 258 828 284

ZIP

Rua Luís Jácome, 19
T (+351) 258 826 594

AFIFE**COMPOSTELA**

E. N. 13
T (+351) 258 981 465

MARIANA

Est. Pedro Homem de Melo
T (+351) 258 981 327

SENHOR BACALHAU

Caminho da Gateira, 82
T (+351) 258 981 377

AREOSA**ALQUIMISTA**

Av. da Igreja
T (+351) 258 822 612

ARTES CAFFÉ

Av. da Povoença, 451
T (+351) 258 813 177

A MORGUE

Av. do Meio, 646
T (+351) 258 106 082

O BOTEQUIM

Av. do Meio, 146
T (+351) 258 023 425

MARBELLA

Praça Suavila, nº 10
T (+351) 258 821 901

BARROSELAS**CHURRASQ. S. JORGE**

Rua do Alambique, nº 55
T (+351) 258 971 241

FRANGO REAL

Rua Aquilino Ribeiro
T (+351) 258 773 300

LA BOMBA

Rua da Estação, 70, R/C. Dt.
T (+351) 917 787 065

PÉROLA DO NEIVA

Rua da Fábrica, 195
T (+351) 258 773 112

PIZZARIA BIG MANUS

Trav do Notário
T (+351) 258 772 397

CARDIELOS**SABORES**

E. N. 202, 124
T (+351) 258 831 143

CARREÇO**AREIA**

Av. da Praia-Praia de Carreço
T (+351) 258 821 892

CARVOEIRO**SOL DOCE**

Rua do Mirante 938
T (+351) 258 773 035

CASTELO DE NEIVA

MARISQUEIRA AF

Rua da Pedra Alta, 200
T (+351) 258 871 651

SEGREDOS DO MAR

Av. da Praia
T (+351) 258 871 434

ENCOSTA DO MONTE

Rua das Grades, 99
T (+351) 258 371 264

O CARVALHO

Sendim de Cima, Avenida Central
T (+351) 258 871 101

CHAFÉ – AMOROSA

MAGMA CAFÉ I

Av. do Atlântico, 218/219,R/C Dtº
T (+351) 258 325 240

MARÉ VIVA MARISQUEIRA

Av. do Atlântico, 214
T (+351) 258 323 070

MANUS

A Atlântico - Amorosa
T (+351) 964 033 794

MARDENTRO

Rua da Praia, nº 90 - Amorosa
T (+351) 258 333 903

MARINHO

Av do Norte - Amorosa
T (+351) 258 331 046

O CARACOL

Estrada Nova - Chafé
T (+351) 258 351 887

REST. DAS PISCINAS

Av. do Atlântico
T (+351) 258 333 639

TASCA DO GOMES

Rua da Amorosa
T (+351) 963 444 892

DARQUE

AQUÁRIO

Av. do Cabedelo
T (+351) 258 371 022

CERVEJARIA QUANTO BASTE

Travessa do Limão, 87
T (+351) 258 331 023

CHURRASCARIA CITÂNIA

Rua dos Lilases – Cais Novo
T (+351) 258 322 372

DARQUE VILA

Rua das Rosas
T (+351) 258 322 032

DOM AUGUSTO

Travessa dos Antúrios
T (+351) 258 322 491

FEELVIANA

Praia do Cabedelo
T (+351) 258 330 330

FLÔR DO LIMA

Rua de São Brás, 375
T (+351) 926 192 397

FOZ CAFFÉ

Av. do Cabedelo
T (+351) 258 325 107

FOZ NA BRAZA

Av. do Cabedelo, Edif. Foz Cafe
T (+351) 258 325 107

O ESPIGUEIRO

Quinta do Santinho
T (+351) 258 322 156

DEOCRISTE

MONTE CRASTO

Lugar da Gandra
T (+351) 258 730 500

LANHESES

A FORNALHA

Lugar da Seara
T (+351) 258 731 510

TERESA

Largo da Feira, nº 350, R/C
T (+351) 258 731 409

MEADELA

AS 4 COLUNAS

R. João Paulo II
T (+351) 258 408 215

DON PRIOR

Rua da Argaçosa
T (+351) 258 820 615

LAGOA

R Arq. Francisco Passos
T (+351) 258 843 093

MEADELA PIZZA-GRILL

Pç. Linha Vale do Lima
T (+351) 258 845 186

PIZZAR. REST. BEIRA RIO

Azenhas Dom Prior
T (+351) 258 842 550

QUINTA DA PRESA

Rua da Presa, 110
T (+351) 258 823 771

MONTARIA

MONTARIENSE

Largo do Souto, 35
T (+351) 258 731 608

NEIVA

MARISQUEIRA ALCAZAR

Av. S. Romão nº7
T (+351) 258 871 125

PONTE DO NEIVA

Av. de S. Romão, 10
T (+351) 258 871 466

PORTUZELO

CAMELO

Rua de Santa Marta
T (+351) 258 839 090

CHURRASQ. STA MARTA

Rua de Stª Marta, 100
T (+351) 258 832 951

A FONTE

Rua Dr. Sousa Gomes, nº 14
T (+351)

SOARES

Rua Embarcadouro do Pinheiro
T (+351) 258 830 646

CHURRASQ. ACAPULCO

Rua de Stª Marta, 35
T (+351) 258 821 725

SERRELEIS

CASA DA AVÓ

Lugar da Granja,189
T (+351) 258 832 864

SUBPORTELA

AS MÓS

Lugar da Lomba
T (+351) 258 771 262

TORRE

O GATO MALTÊS

Rua do Esteiro, 5
T (+351) 258 735 184

VILA NOVA DE ANHA

ANA BELA

Av. Viana do Castelo
T (+351) 258 322 889

VILA DE PUNHE

CHURRASCARIA RIBEIRO

Rua de Alvarães
T (+351) 258 771 391

VILA MOU

MOU DA VILA

Rua da Estrada Nacional, 932
T (+351) 258 735 324



TOURIST ESTABLISHMENTS

HOTEL ESTABLISHMENTS

(Hotels, Lodge/Inn)

POUSADA DE VIANA DO CASTELO (Nº 1484)

Monte de Santa Luzia
4901-909 Viana do Castelo
T (+351) 258 800 370 – F (+351) 258 828 892
E recepcao.mluzia@pousadas.pt
www.pousadas.pt

CAPACITY: 102 – Nº BEDROOMS: 51
Nº BEDROOMS F/ IMPAIRED MOBILITY USERS: 1

CASA MELO ALVIM HOTEL **** (Nº 1529)

Avenida Conde da Carreira, 28
4900-343 Viana do Castelo
T (+351) 258 808 200 – F (+351) 258 808 220
E hotel.meloalvim@unlockhotels.com
www.unlockhotels.com

CAPACITY: 40 – Nº BEDROOMS: 20
Nº BEDROOMS F/ IMPAIRED MOBILITY USERS: 0

AXIS VIANA BUSINESS & SPA **** (Nº 1622)

Avenida Capitão Gaspar de Castro, s/n
4900-462 Viana do Castelo
T (+351) 258 802 000 – F (+351) 258 802 001
E reservas@axisviana.com – www.axisshoteis.com

CAPACITY: 174 – Nº BEDROOMS: 87
Nº BEDROOMS F/ IMPAIRED MOBILITY USERS: 1

FÁBRICA DO CHOCOLATE HOTEL **** (Nº 5694)

Rua Gontim, 70-76
4900-474 Viana do Castelo
T (+351) 258 244 000 – F (+351) 258 244 049
E reservas@fabricadochocolate.com

www.fabricadochocolate.com
CAPACITY: 36 – Nº BEDROOMS: 18
Nº BEDROOMS F/ IMPAIRED MOBILITY USERS: 2

HOTEL FLÔR DE SAL **** (Nº 23)

Avenida de Cabo Verde, nº100 – Praia Norte
4900-568 Viana do Castelo
T (+351) 258 800 100 – F (+351) 258 800 101
E reservas@hotelflordesal.com

www.hotelflordesal.com
CAPACITY: 120 – Nº BEDROOMS: 60
Nº BEDROOMS F/ IMPAIRED MOBILITY USERS: 2

HOTEL FEELVIANA **** (Nº 7085)

Rua Brás de Abreu Soares, nº222, Praia do Cabedelo
4935-159 Darque
T (+351) 258 330 330
E info@hotelfeelviana.com – www.hotelfeelviana.com

CAPACITY: 110 – Nº BEDROOMS: 55
Nº BEDROOMS F/ IMPAIRED MOBILITY USERS: 1

HOTEL MARGARIDA DA PRAÇA *** (Nº 627)

Largo 5 de Outubro, 58
4900-515 Viana do Castelo
T (+351) 258 809 630 / (+351) 964 926 995
F (+351) 258 809 639
E info@margaridadapraça.com

CAPACITY: 24 – Nº BEDROOMS: 13
Nº BEDROOMS F/ IMPAIRED MOBILITY USERS: 0

HOTEL DO PARQUE *** (Nº 1590)

Praça da Galiza, s/n
4900-476 Viana do Castelo
T (+351) 258 828 605 – F (+351) 258 828 612
E reservas@hoteldoparque.com
www.hoteldoparque.com

CAPACITY: 240 – Nº BEDROOMS: 120
Nº BEDROOMS F/ IMPAIRED MOBILITY USERS: 2

HOTEL RALI VIANA **** (Nº 1018)

Avenida D. Afonso III, 180
4900-477 Viana do Castelo
T (+351) 258 829 770 – F (+351) 258 820 060
E reservas@hotelraliviana.com

www.hotelraliviana.com
CAPACITY: 75 – Nº BEDROOMS: 39
Nº BEDROOMS F/ IMPAIRED MOBILITY USERS: 1

ABSOLUTO DESIGN HOTEL ** (Nº 735i)

Rua da Bandeira, 174
4900-560 Viana do Castelo
T (+351) 961 310 754 / 934 998 862
T/ F (+351) 258 404 596
E absolutohotel@hotmail.com

CAPACITY: 24 – Nº BEDROOMS: 12
Nº BEDROOMS F/ IMPAIRED MOBILITY USERS: 0

HOTEL JARDIM ** (Nº 1106)

Largo 5 de Outubro, 68
4900-515 Viana do Castelo
T (+351) 258 828 915 – F (+351) 258 828 917
E hjardimviana@gmail.com

www.hoteljardimviana.pt
CAPACITY: 40 – Nº BEDROOMS: 20
Nº BEDROOMS F/ IMPAIRED MOBILITY USERS: 0

HOTEL LARANJEIRA ** (Nº 832)

Rua Cândido dos Reis, 45
4900-082 Viana do Castelo
T (+351) 258 822 261 – F (+351) 258 821 902
E info@hotelaranjeira.com – www.hotelaranjeira.com

CAPACITY: 52 – Nº BEDROOMS: 26
Nº BEDROOMS F/ IMPAIRED MOBILITY USERS: 1

HOTEL CALATRAVA ** (Nº 3675)

Rua Manuel Fiúza Júnior, 157
4900-458 Viana do Castelo
T (+351) 258 828 911 – F (+351) 258 828 637
E hotelcalatrava@gmail.com

CAPACITY: 28 – Nº BEDROOMS: 15
Nº BEDROOMS F/ IMPAIRED MOBILITY USERS: 1

HOTEL DO CAIS ** (Nº 4176)

Estrada Nacional 13 – Cais Novo
4935-176 Darque
T (+351) 258 331 031 – F (+351) 258 321 821
E clubpostilhao@gmail.com / a-keira@hotmail.com

CAPACITY: 37 – Nº BEDROOMS: 23
Nº BEDROOMS F/ IMPAIRED MOBILITY USERS: 0

HOTEL A PONTE * (Nº 5578)

Rua Poço Pescadouro, nº32 – Meadela
4900-782 Viana do Castelo
T (+351) 258 831 469 / 966 774 511
F (+351) 258 333 402

E reservas@a-ponte.pt – www.a-ponte.pt
CAPACITY: 21 – Nº BEDROOMS: 11
Nº BEDROOMS F/ IMPAIRED MOBILITY USERS: 1

HOTEL AREIAS CLARAS ** (Nº 4326)

Rua da Praia, nº 54 – Praia da Amorosa
4935-580 Chafé
T (+351) 258 351 014 / 925 876 821
F (+351) 258 333 402

E areiasclaras.hotel@gmail.com – <http://areiasclaras.pt>
CAPACITY: 40 – Nº BEDROOMS: 20
Nº BEDROOMS F/ IMPAIRED MOBILITY USERS: 1

HOTEL COMPOSTELA ** (Nº 7474)

Estrada Nacional 13, Km 79, 2304
4900-060 Afife
T (+351) 258 981 465 – F (+351) 258 981 244
E geral@residencialcompostela.com

www.residencialcompostela.com
CAPACITY: 130 – Nº BEDROOMS: 60
Nº BEDROOMS F/ IMPAIRED MOBILITY USERS: 2

TOURIST APARTMENTS

QUINTA DE VALVERDE – APARTAMENTOS TURÍSTICOS ** (Nº 1032)**

Estrada de Santa Luzia – Ursulinas
4900-408 Viana do Castelo
T (+351) 937 043 159 / 939 451 592

E reservas@quintadevalverde.pt
www.quintadevalverde.com
CAPACITY: 21 – Nº BEDROOMS: 7
Nº BEDROOMS F/ IMPAIRED MOBILITY USERS: 0

MANOR HOUSES

CASA DOS COSTA BARROS – TURISMO DE HABITAÇÃO (Nº 325)

Rua de Pedro, 22 a 28
4900-538 Viana do Castelo
T (+351) 258 823 705 – F (+351) 258 824 383
E casacostabarras@casacostabarras.pt

www.casacostabarras.pt
CAPACITY: 16 – Nº BEDROOMS: 8
Nº BEDROOMS F/ IMPAIRED MOBILITY USERS: 0

CASA MANUEL ESPREGUEIRA OLIVEIRA – TURISMO HABITAÇÃO (Nº 5265)

Rua Manuel Espregueira, 190
4900-318 Viana do Castelo
T (+351) 258 407 336 / 919 836 577
F (+351) 258 407 338

E info@casamanuelespregueiraoliveira.com
www.casamanuelespregueiraoliveira.com
CAPACITY: 12 – Nº BEDROOMS: 6
Nº BEDROOMS F/ IMPAIRED MOBILITY USERS: 0

QUINTA DA BOUCA D'ARQUES – TURISMO DE HABITAÇÃO (Nº 210)

Rua Abreu Teixeira, 333
4905-641 Vila de Punhe
T (+351) 968 044 992 / 967 571 524 / 226 179 431
E joacomouto@net.sapo.pt – www.boucadarques.com

CAPACITY: 16 – Nº BEDROOMS: 8
Nº BEDROOMS F/ IMPAIRED MOBILITY USERS: 0

QUINTA DO MONTEVERDE – TURISMO DE HABITAÇÃO (Nº 3885)

Avenida da Praia, 338
4935-567 Castelo do Neiva
T (+351) 258 871 134 / 963 313 030
F (+351) 258 871 136

E info@quintamonteverde.com
www.quintamonteverde.com
CAPACITY: 20 – Nº BEDROOMS: 9
Nº BEDROOMS F/ IMPAIRED MOBILITY USERS: 7

RURAL TOURISM

(Country Houses, Agro-tourism, Rural Hotel)

CASA DO AMEAL – CASA DE CAMPO (Nº 3533)

Rua do Ameal, 119 – Meadela
4900-585 Viana do Castelo
T (+351) 258 822 403 / 914 206 227
F (+351) 258 822 405

E casadoameal@gmail.com – www.casadoameal.com
CAPACITY: 25 – Nº BEDROOMS: 8
Nº BEDROOMS F/ IMPAIRED MOBILITY USERS: 0

QUINTA DA BOA VIAGEM – AGROTURISMO (Nº 7377)

Largo da Boa Viagem, nº 805 – Areosa
4900-661 Viana do Castelo
T (+351) 258 835 835 / 935 835 835
F (+351) 258 835 835

E info@quintadaboaviagem.com
www.quintadaboaviagem.com
CAPACITY: 24 – Nº BEDROOMS: 12
Nº BEDROOMS F/ IMPAIRED MOBILITY USERS: 0



CASA DO NATO – CASA DE CAMPO (Nº 1005)

Rua do Moreno, nº 130
4900-278 Carreço
T (+351) 258 834 041 / 918 018 103 / 916 338 940
F (+351) 258 834 041
E geral@casadonato.com / casadonato@clix.pt
www.casadonato.com
CAPACITY: 16 – Nº BEDROOMS: 8
Nº BEDROOMS F/ IMPAIRED MOBILITY USERS: 0

QUINTA DO VALE DO MONTE – AGROTURISMO (Nº 1621)

Av. Santoinho, nº 1219
4935-176 Darque
T (+351) 258 325 214 / (+351) 916 760 886
E geral@quintavalemonte.com
www.quintavalemonte.com
CAPACITY: 10 – Nº BEDROOMS: 7
Nº BEDROOMS F/ IMPAIRED MOBILITY USERS: 0

CASA D' JOÃO ENES- AFIFE RESIDENCE – CASA DE CAMPO (Nº 3711)

Travessa da Lapa, Casa D' João Enes, nº 50
4900-012 Afife
T (+351) 258 817 880 / 966 235 417
F (+351) 258 817 881
E info@casadojoaoenes.com – www.casadojoaoenes.com
CAPACITY: 20 – Nº BEDROOMS: 10
Nº BEDROOMS F/ IMPAIRED MOBILITY USERS: 1

CASA DE SANTA FILOMENA – CASA DE CAMPO (Nº 3234)

Estrada de Cabanas, 621
4900-012 Afife
T (+351) 258 981 619 – F (+351) 226 175 936
E soc.com.smiths@mail.telepac.pt
CAPACITY: 8 – Nº BEDROOMS: 4
Nº BEDROOMS F/ IMPAIRED MOBILITY USERS: 0

CASA DO REFILO – CASA DE CAMPO (Nº 5548)
CAMINHO DO MARINHO, Nº 1

4900-012 Afife
T (+351) 258 983 164 / 965 415 431
F (+351) 258 826 529
E gloria.lamas@hotmail.com
CAPACITY: 13 – Nº BEDROOMS: 7
Nº BEDROOMS F/ IMPAIRED MOBILITY USERS: 0

CASA DE SANTA ANA – CASA DE CAMPO (Nº 6328)

Caminho do Barroso, 357
4900-012 Afife
T (+351) 258 981 774
E csa.ter@sapo.pt
CAPACITY: 10 – Nº BEDROOMS: 5
Nº BEDROOMS F/ IMPAIRED MOBILITY USERS: 0

CASA DA REINA – CASA DE CAMPO (Nº 5263)

Caminho do Pardinheiro, nº 122
4935-592 Chafé
T (+351) 258 351 882 / 925 001 161 / 962 893 944
F (+351) 258 351 256
E geral@casadareina.com – www.casadareina.com
CAPACITY: 8 – Nº BEDROOMS: 4
Nº BEDROOMS F/ IMPAIRED MOBILITY USERS: 0

QUINTA SÃO ROMÃO DO NEIVA – CASA DE CAMPO (Nº 5453)

Rua Caminho de Santiago, nº61
4935-507 Neiva
T (+351) 961 364 668
E quinta.s.romao@gmail.com
facebook.com/quintasaoromao
CAPACITY: 12 – Nº BEDROOMS: 6
Nº BEDROOMS F/ IMPAIRED MOBILITY USERS: 6

QUINTA DO BENTO NOVO – CASA DE CAMPO (Nº 12)

Caminho da Cabine, nº 187 – Lugar do Pisco
4925-581 Perre
T (+351) 258 830 766 / 962 823 186
F (+351) 300 000 727
E sede@quintabentonovo.pt
www.quintabentonovo.pt
CAPACITY: 18 – Nº BEDROOMS: 7
Nº BEDROOMS F/ IMPAIRED MOBILITY USERS: 0

QUINTA DO PISCO – CASA DE CAMPO (Nº 6022)

Caminho da Capela, nº 37 Perre
4925-580 Perre
T (+351) 917 509 283
E jpereiralima@sapo.pt
CAPACITY: 7 – Nº BEDROOMS: 4
Nº BEDROOMS F/ IMPAIRED MOBILITY USERS: 0

QUINTA DO PAÇO D'ANHA – AGROTURISMO (Nº 149)

Avenida da Estrada Real, nº2
4935-337 Vila Nova de Anha
T (+351) 258 322 459 – F (+351) 258 323 904
E geral@pacoanha.com – www.pacoanha.com
CAPACITY: 16 – Nº BEDROOMS: 8
Nº BEDROOMS F/ IMPAIRED MOBILITY USERS: 0

QUINTA DOM SAPO – AGROTURISMO (Nº 51)

Lugar da Torre, 34
4925-348 Cardielos
T (+351) 258 839 080 / 918 759 776
F (+351) 258 839 089
E info@quintadomsapo.com
www.quintadomsapo.com
CAPACITY: 20 – Nº BEDROOMS: 10
Nº BEDROOMS F/ IMPAIRED MOBILITY USERS: 0

QUINTA DE S. SEBASTIÃO – HOTEL RURAL *** (Nº 713)

Rua Faria Torres, 2
4905-475 Barrocelas
T (+351) 258 770 520 – F (+351) 258 770 521
E reservas@quintadesaosebastiao.com
www.quintadesaosebastiao.com
CAPACITY: 19 – Nº BEDROOMS: 11
Nº BEDROOMS F/ IMPAIRED MOBILITY USERS: 0

CASA DO MONTE DE ROQUES – AGROTURISMO (Nº 4658)

Rua Abreu Teixeira, 435
4905-641 Vila de Punhe
T (+351) 226 106 968 / 962 307 767 / 934 927 180
E santa.eulalia.lda@gmail.com
CAPACITY: 10 – Nº BEDROOMS: 4
Nº BEDROOMS F/ IMPAIRED MOBILITY USERS: 1

QUINTA DO FORTUNATO– **AGROTURISMO** (Nº 5554)

Caminho Sr.ª dos Remédios, nº220

4925-209 Meixedo

T (+351) 917 677 011 / 965 223 445**E** quintadofortunato@gmail.com**www.quintadofortunato.pt**

CAPACITY: 10 – Nº BEDROOMS: 5

Nº BEDROOMS / IMPAIRED MOBILITY USERS: 1

LOCAL ACCOMMODATION – AL**Hosting Establishments****PENSÃO O LARANJEIRA** (Nº 59388/AL)

Rua Manuel Espregueira, nº 24, 1º e 2º

4900-318 Viana do Castelo

T (+351) 258 822 258 / 966 717 122**F** (+351) 258 402 967**E** geral@olaranjeira.com – **www.olaranjeira.com**

Nº BEDS: 9 – Nº USERS: 14 – Nº BEDROOMS: 7

DOLCE VIANNA (Nº 8286/AL)

Rua do Poço, nº44

4900-519 Viana do Castelo

T/F (+351) 258 824 860**E** pizzariadolcevianna@gmail.com

Nº BEDS: 7 – Nº USERS: 14 – Nº BEDROOMS: 7

VERDE MINHO (Nº 7430/AL)

Rua do Anjinho, 34

4900-320 Viana do Castelo

T (+351) 258 822 386**E** pensão_verde_minho@hotmail.com

Nº BEDS: 7 – Nº USERS: 13 – Nº BEDROOMS: 7

HOSPEDARIA DA Nª SRA DO CARMO (Nº36267/AL)

Rua Grande, 72

4900-542 Viana do Castelo

T (+351) 258 825 118 / 963 179 720**E** batistaesilva@sapo.pt

Nº BEDS: 17 – Nº USERS: 21 – Nº BEDROOMS: 8

ZIMBÓRIO GUEST HOUSE (Nº 57696/AL)

Rua Gago Coutinho, 26

4900-510 Viana do Castelo

T (+351) 258 807 210 / 258 807 219 / 938 354 863**E** estado@economop.pt

Nº BEDS: 5 – Nº USERS: 7 – Nº BEDROOMS: 2

DONA EMÍLIA– **CASA DE HÓSPEDES/GUESTHOUSE** (Nº33635/AL)

Rua Manuel Espregueira, nº 6

4900-318 Viana do Castelo

T (+351) 917 811 392 / 914 450 424**E** dona.emilia.guesthouse@gmail.com**www.dona-emilia.com**

Nº BEDS: 27 – Nº USERS: 27

Nº BEDROOMS: 6 – Nº BELICHES: 6

MARIA DE FÁTIMA MEIREIRA**DE OLIVEIRA** (Nº 52780 /AL)

Rua da Vedoria

4900-335 Viana do Castelo

E k4pital15@gmail.com

Nº BEDS: 3 – Nº USERS: 6 – Nº BEDROOMS: 3

JOÃO GONÇALVES MALHEIRO (Nº 52679/AL)

Rua Bernardo Abrunhosa

4900-309 Viana do Castelo

E mrodriguescarmo@gmail.com

Nº BEDS: 1 – Nº USERS: 4 – Nº BEDROOMS: 1

AMARO HOUSE (Nº 48721/AL)

Caminho Cotole

4900-012 Afife

E joao.p.alves@hotmail.com

Nº BEDS: 3 – Nº USERS: 4 – Nº BEDROOMS: 2

QUARTO CHARME (Nº39203/AL)

Travessa Loureiro

4900-012 Afife

E silviaparentesilva@gmail.com

Nº BEDS: 2 – Nº USERS: 3 – Nº BEDROOMS: 1

SANDY MAR (Nº 1519/AL)

Rua Pêro Galego, nº 203 – Urbanização do Cabedelo

4935-056 Darque

T (+351) 258 322 982 / 964 078 309**F** (+351) 258 322 982**E** info@sandymar.com / sandymar@sapo.pt**www.sandymar.com**

Nº BEDS: 16 – Nº USERS: 16 – Nº BEDROOMS: 8

CASA ARADA (Nº 48219/AL)

Travessa Vinha Nova

4900-278 Carreço

E aucke1947@gmail.com

Nº BEDS: 3 – Nº USERS: 6 – Nº BEDROOMS: 3

AFRODITE MTL (Nº 4172/AL)

Rua B, 81, Zona Industrial do Neiva, 1ª fase

4935-250 Castelo do Neiva

T (+351) 258 371 534 / 919 075 528**F** (+351) 258 371 536**E** geral@afroditemtl.com – **www.afroditemtl.com**

Nº BEDS: 16 – Nº USERS: 32 – Nº BEDROOMS: 16

CASTELINHO DE PORTUZELO (Nº 41533/AL)

Rua Portuzelo

4925-092 Santa Marta de Portuzelo

E luciano.moure@gmail.com

Nº BEDS: 9 – Nº USERS: 18 – Nº BEDROOMS: 9

Residences**A' VIANESA** (Nº 12499/AL)

Rua Emídio Navarro, nº35

4900-531 Viana do Castelo

T (+351) 965 415 431 / 258 826 529**E** gloria.lamas@hotmail.com

Nº BEDS: 7 – Nº USERS: 11 – Nº BEDROOMS: 5

LOVELY SUNNY HOUSE (Nº26740/AL)

Rua Caminho Velho, Rua da Presa, 51

4900-313 Viana do Castelo

E cmsousaribeiro@hotmail.com

Nº BEDS: 3 – Nº USERS: 4 – Nº BEDROOMS: 2

CASAS DO CABEDELLO (9582/AL)

Rua Fernão Magalhães

4935-157 Viana do Castelo

E pedrobraz@usa.net

Nº BEDS: 5 – Nº USERS: 6 – Nº BEDROOMS: 3

CASA MORAIS (Nº 4241/AL)

Rua Violetas de Areosa
4900-937 Viana do Castelo
T (+351) 258 836 184 / 965 050 599
E asmorays@gmail.com

Nº BEDS: 6 — Nº USERS: 6 — Nº BEDROOMS: 3

MANSÃO SUSPIROS DE VIANA (Nº 1552/AL)

Rua do Ameal, 611 - Meadela
4900-585 Viana do Castelo
T (+351) 965 410 558

E pedrosaleite216@sapo.pt
Nº BEDS: 5 — Nº USERS: 10 — Nº BEDROOMS: 5

CASA DE S. TIAGO (Nº30374/AL)

Rua de S. Tiago, 1º, Monserrate
4900-340 Viana do Castelo
E dinisregocosta@gmail.com

Nº BEDS: 3 — Nº USERS: 5 — Nº BEDROOMS: 2

SEA HOUSE (Nº22519/AL)

Rua Fernão Martins da Costa
4935-158 Darque
E dcampelo@sapo.pt

Nº BEDS: 5 — Nº USERS: 8 — Nº BEDROOMS: 3

CASAS DO CABEDEL (Nº 9579/AL)

Rua Fernão Magalhães
4935-157 Darque
E pedrobraz@usa.net

Nº BEDS: 4 — Nº USERS: 6 — Nº BEDROOMS: 3

ESTÚDIO RÚSTICO (Nº7058/AL)

Rua Sorrio, Além do Rio
4900-918 Areosa
E acav@netcabo.pt

Nº BEDS: 1 — Nº USERS: 2 — Nº BEDROOMS: 1

PRAIA E CAMPO (Nº 58/AL)

Rua Dona Antónia
4900-588 Areosa
E loureirobento@gmail.com

Nº BEDS: 8 — Nº USERS: 8 — Nº BEDROOMS: 4

VIVENDA CARDOSA (Nº 6862/AL)

Rua Sorrio, Além do Rio
4900-918 Areosa
E acav@netcabo.pt

Nº BEDS: 4 — Nº USERS: 6 — Nº BEDROOMS: 4

CASA DOS MANJERICOS (Nº 51847/AL)

Rua dos Manjericos de Areosa
4900-812 Areosa
E josecorreiavilar@gmail.com

Nº BEDS: 6 — Nº USERS: 6 — Nº BEDROOMS: 3

CASA DAS BARREIRAS (Nº29416/AL)

Rua Barreiras, 322
4900-649 Areosa
T (+351) 258 825 844 / 935 852 550

E dianagarrido@sapo.pt
Nº BEDS: 8 — Nº USERS: 8 — Nº BEDROOMS: 4

LUMAR (Nº 17128/AL)

Avenida do Meio
4900-834 Areosa
E brancomorais@hotmail.com

Nº BEDS: 6 — Nº USERS: 10 — Nº BEDROOMS: 5

QUINTA DA PEDREIRA (Nº 48218/AL)

Rua Paula Ferreira, 1º
4900-862 Areosa
E menbraval@gmail.com

Nº BEDS: 7 — Nº USERS: 12 — Nº BEDROOMS: 6

**CASA DE FORNELOS
- MONTEADOR/CARREÇO** (Nº14793/AL)

Rua de Fornelos, 1º, Montedor
4900-279 Carreço
E ruimplores@hotmail.com

Nº BEDS: 3 — Nº USERS: 6 — Nº BEDROOMS: 2

CASA DO CHAFARIZ (Nº27144/AL)

Rua do Jogo
4900-281 Carreço
E jacomemartins@sapo.pt

Nº BEDS: 2 — Nº USERS: 4 — Nº BEDROOMS: 1

CASA DO POUADOURO (Nº31922/AL)

Avenida de Paçô, 544, R/C
4900-280 Carreço
T (+351) 917 289 752

E alsousa@netcabo.pt
Nº BEDS: 3 — Nº USERS: 4 — Nº BEDROOMS: 1

A CASA DO MONTEADOR (Nº36370/AL)

Rua Velosa, 1º
4900-279 Carreço
E ameliavalegon@hotmail.com

Nº BEDS: 3 — Nº USERS: 4 — Nº BEDROOMS: 2

VIVENDA DA ENCOSTA (Nº 13622/AL)

Rua Cova do Ladrão, nº 176
4900-278 Carreço
T (+351) 965 548 792

E fatimacarvalho1944@sapo.pt
Nº BEDS: 6 — Nº USERS: 9 — Nº BEDROOMS: 4

CASA DO FAROL (Nº32005/AL)

Avenida de Montedor, Gandra
4900-279 Carreço
E holidayssalr@gmail.com

Nº BEDS: 6 — Nº USERS: 8 — Nº BEDROOMS: 4

JOÃO PEDRO COSTA PINTO LEITE (Nº24639/AL)

Rua Pincha
4900-280 Carreço
E jp@ribul.pt

Nº BEDS: 7 — Nº USERS: 10 — Nº BEDROOMS: 5

VARANDA DE PAÇÔ (Nº28903/AL)

Rua Roteira
4900-279 Carreço
E varandadepaco@gmail.com

Nº BEDS: 3 — Nº USERS: 6 — Nº BEDROOMS: 3

CASA D'AFIFE (Nº 56320/AL)

Rua Estrada Nacional 13
4900-011 Afife
E nanelsonazevedo@gmail.com

Nº BEDS: 3 — Nº USERS: 6 — Nº BEDROOMS: 3

CASA DE TRAJINHA (Nº 11749/AL)

Caminho Tomenga, Lugar Frinhas
4900-012 Afife
T (+351) 258981397 / 918712179

E casadetrajahi@sapo.pt
Nº BEDS: 3 — Nº USERS: 6 — Nº BEDROOMS: 3

UM PEQUENO PEDAÇO DE PARAÍSO (Nº29015/AL)

Caminho dos Cortiços, Lugar da Gateira
4900-012 Afife

E nani@esmonserrate.org

Nº BEDS: 3 — Nº USERS: 8 — Nº BEDROOMS: 3

CASA COLAÇO (Nº 18039/AL)

Caminho da Costela, Senra
4900-012 Afife

E leandro.neves.matos@sapo.pt

Nº BEDS: 6 — Nº USERS: 6 — Nº BEDROOMS: 3

CASA ALHAMBRA (Nº 15659/AL)

Caminho da Gateira
4900-067 — Afife

E marcoafife18@gmail.com

Nº BEDS: 3 — Nº USERS: 4 — Nº BEDROOMS: 2

CASA DO MARINHO (Nº 10351/AL)

Caminho do Marinho
4900-012 Afife

T (+351) 938 336 017

E dulcesoares51@gmail.com / casadomarinho@live.com

www.casadomarinho.wordpress.com

Nº BEDS: 5 — Nº USERS: 8 — Nº BEDROOMS: 4

CASA DC AFIFE (Nº19307/AL)

Caminho Monte Agudo
4900-012 Afife

E prodriguese@hotmail.com

Nº BEDS: 6 — Nº USERS: 8 — Nº BEDROOMS: 3

CASA DO PUGA (Nº 14546/AL)

Travessa da Ribela
4900-012 Afife

E casimiropuga@sapo.pt

Nº BEDS: 2 — Nº USERS: 4 — Nº BEDROOMS: 1

CASA DA RIBELA (Nº 6942/AL)

Caminho da Ribela
4900-012 Afife

E margarida-sacarneiro@hotmail.com

Nº BEDS: 6 — Nº USERS: 8 — Nº BEDROOMS: 4

CASA DO TELHEIRO (Nº21451/AL)

Caminho do Telheiro
4900-012 Afife

E acvanos@clix.pt

Nº BEDS: 7 — Nº USERS: 9 — Nº BEDROOMS: 2

ALOJAMENTO RURAL VIANA (Nº 56160/AL)

Rua Francisco Carvalhido Rocha
4925-548 Outeiro

E americogigante@sapo.pt

Nº BEDS: 5 — Nº USERS: 8 — Nº BEDROOMS: 3

CASA DE VALE (Nº 48590/AL)

Rua Vale
4905-336 Barrocelas

E lucinda.telheiro@gmail.com

Nº BEDS: 4 — Nº USERS: 8 — Nº BEDROOMS: 3

CASA DOS CARREIRAS (Nº 52678/AL)

Rua Frei Custódio, nº238
4965-447 Barrocelas

T (+351) 966 743 623

E cesarscarvalho@gmail.com / carvalho.guida@gmail.com

Nº BEDS: 5 — Nº USERS: 8 — Nº BEDROOMS: 4

CASA DE SANTANA (Nº 57922/AL)

Rua de Armães
4905-223 Barrocelas e Carvoeiro

E ardebar@hotmail.com

Nº BEDS: 2 — Nº USERS: 4 — Nº BEDROOMS: 2

MINERAL HOUSE (Nº29486/AL)

Beco do Vale, 1º
4905-243 Carvoeiro

E info@mineralhouse.net

Nº BEDS: 3 — Nº USERS: 6 — Nº BEDROOMS: 3

CASA DE XISTO

— **CHARME DA MONTANHA** (Nº 52065/AL)

Caminho do Russo — Além do Rio
4925-471 Montaris

E arturlimacruz@gmail.com

Nº BEDS: 4 — Nº USERS: 6 — Nº BEDROOMS: 3

CABEDELÓ SEASIDE HOUSE (Nº 51370/AL)

Rua Pero Galego, Cabedeló
4935-056 Darque

E fsilva.jorge@gmail.com

Nº BEDS: 3 — Nº USERS: 5 — Nº BEDROOMS: 2

CASA DAS BOUÇAS (Nº46873/AL)

Rua Bouças
4935-210 Darque

E joanacs@yahoo.com

Nº BEDS: 2 — Nº USERS: 4 — Nº BEDROOMS: 2

CASA DAS DUNAS (Nº32242/AL)

Rua das Dunas, Lugar de Sendim — Lote 21
4935-572 Castelo do Neiva

E lopessoares@hotmail.com

Nº BEDS: 3 — Nº USERS: 6 — Nº BEDROOMS: 3

CASA DA FONTE (Nº 4157/AL)

Rua Fonte da Ermida
4935-564 Castelo do Neiva

T (+351) 968 086 237 / 224 637 139

E ligiagentil@sapo.pt

Nº BEDS: 4 — Nº USERS: 6 — Nº BEDROOMS: 3

MORADIA 2 (Nº 52718/AL)

Quelha Medonha
4935-588 Chafé

E luciliadebrito@gmail.com

Nº BEDS: 3 — Nº USERS: 8 — Nº BEDROOMS: 3

MORADIA 1 (Nº 52711/AL)

Quelha Medonha
4935-588 Chafé

E luciliadebrito@gmail.com

Nº BEDS: 3 — Nº USERS: 8 — Nº BEDROOMS: 3

CASA DO MARÔCO (Nº21090/AL)

Caminho do Calvário
4925-201 Meixedo

E mmrochag@gmail.com

Nº BEDS: 4 — Nº USERS: 8 — Nº BEDROOMS: 4

JOSÉ NEGRÃO (Nº41201/AL)

Rua Reitor Agostinho de Brito
4925-098 Santa Marta de Portuzelo

E geral.negraojose@gmail.com

Nº BEDS: 5 — Nº USERS: 9 — Nº BEDROOMS: 5

EMBARCADOURO (61631/AL)
Rua do Embarcadouro, N°27
4925-590 Serreleis
E domingos.carvalho@iefp.pt
N° BEDS: 5 — N° USERS: 10 — N° BEDROOMS: 4

CASA DO RIO (N° 12425/AL)
Rua Andoreiras
4925-326 Amonde
E lozali@hotmail.com
N° BEDS: 3 — N° USERS: 4 — N° BEDROOMS: 1

CASA DOS AVÓS (N°24816)
Rua Dr. Joaquim Fernandes Ferreira, Lugar da Igreja
4935-839 Vila Fria
E amorimiguel@gmail.com
N° BEDS: 4 — N° USERS: 8 — N° BEDROOMS: 4

CASA DAS OLIVEIRAS (N° 51735/AL)
Rua Calçada da Igreja
4935-653 Vila Franca
E mariaflemos@gmail.com
N° BEDS: 7 — N° USERS: 9 — N° BEDROOMS: 5

CASA DIAS (N°19593/AL)
Rua do Reguengo
4935-389 Vila Nova de Anha
E mariacelestefonso@hotmail.com
N° BEDS: 5 — N° USERS: 8 — N° BEDROOMS: 4

CASA GRANJA (N°25838/AL)
Travessa do Reguengo
4935-389 Vila Nova de Anha
E jg.granjas@gmail.com
N° BEDS: 5 — N° USERS: 10 — N° BEDROOMS: 4

POOL HOUSE (N°39810/AL)
Travessa Eiras
4905-204 Alvarães
E manuelfernandolourenco@gmail.com
N° BEDS: 8 — N° USERS: 10 — N° BEDROOMS: 4

MANSÃO DE ESTILO (N°21298/AL)
Rua Fonte do Paço
4905-208 Alvarães
E josevieira924@gmail.com
N° BEDS: 3 — N° USERS: 9 — N° BEDROOMS: 3

QUINTA DO OUTEIRO (N°28841/AL)
Beco Santana, 3°
4925-361 Freixeiro de Soutelo
E alexandre.abrantes51@gmail.com
N° BEDS: 5 — N° USERS: 8 — N° BEDROOMS: 4

CASA DA RABIELA (N° 52071/AL)
Rua Rabiela 238
4925-370 Freixeiro de Soutelo
T (+351) 932 302 253
E josemarialino@gmail.com
N° BEDS: 6 — N° USERS: 7 — N° BEDROOMS: 3

QUINTA MIRANDA (N°55982/AL)
Avenida Merufe, 778
4905-608 Geraz do Lima (Santa Maria)
E quintamiranda.tr@gmail.com
N° BEDS: 7 — N° USERS: 9 — N° BEDROOMS: 5

VILLA VISTA (N°25371/AL)
Caminho de Paredes
4905-571 Geraz do Lima (S. Maria, S. Leocádia,
Moreira), Deão
E info@distinctiveportugal.com
N° BEDS: 5 — N° USERS: 8 — N° BEDROOMS: 8

Apartments

APARTAMENTO RIO LETHES (N° 2186/AL)
Alameda João Alves Cerqueira
4900-050 Viana do Castelo
E monteirocruz84@gmail.com
N° BEDS: 3 — N° USERS: 5 — N° BEDROOMS: 2

MAR ALTO (N° 9127/AL)
Rua Filipe Terzi, Areosa
4900-743 Viana do Castelo
E jsoserosario9@msn.com
N° BEDS: 2 — N° USERS: 4 — N° BEDROOMS: 2

CASA NA PRAIA (N° 17126/AL)
Rua Fernão Martins Costa, Bloco C, Setor 3
4935-158 Darque
E kasaviana@gmail.com
N° BEDS: 2 — N° USERS: 4 — N° BEDROOMS: 1

CABEDELÓ BEACH HOUSE (N° 17127/AL)
Rua Fernão Martins da Costa – Cabedelo
4935-158 Darque
E cabedelobhouse@gmail.com
N° BEDS: 2 — N° USERS: 2 — N° BEDROOMS: 1

SOL (N° 48720/AL)
Rua Arquitecto André Soares, lote 92, bloco 2B, 1°
4935-165 Darque
E rui_santosj@hotmail.com
N° BEDS: 2 — N° USERS: 4 — N° BEDROOMS: 1

APARTAMENTO ATLÂNTICO (57371/AL)
Caminho Cabriteira n° 445 3 Direito Trás
4900-012 Afife
E pmfnascimento@outlook.pt
N° BEDS: 4 — N° USERS: 6 — N° BEDROOMS: 2

MB30 (N° 49668/AL)
Rua Mateus Barbosa
4900-490 Viana do Castelo
E helvis@netcabo.pt
N° BEDS: 5 — N° USERS: 6 — N° BEDROOMS: 3

MB30 (N° 4167/AL)
Rua Mateus Barbosa
4900-508 Viana do Castelo
E susana@objectos-misturados.pt
N° BEDS: 2 — N° USERS: 4 — N° BEDROOMS: 2

AVENIDA VIANA (N° 19317/AL)
Avenida Combatentes da Grande Guerra, 49, 3°
4900-563 Viana do Castelo
E amcribeiro.roc@gmail.com
N° BEDS: 6 — N° USERS: 10 — N° BEDROOMS: 4

APARTAMENTOS VALDEMAR (N° 20216/AL)
Rua Manuel Espregueira, 3°
4900-318 Viana do Castelo
E valdemar_lima@sapo.pt
T (+351) 966 162 557
N° BEDS: 2 — N° USERS: 3 — N° BEDROOMS: 1

APARTAMENTOS VALDEMAR (Nº 20236/AL)

Rua Manuel Espregueira
4900-318 Viana do Castelo
T (+351) 966 162 557

E valdemar_lima@sapo.pt

Nº BEDS: 2 — Nº USERS: 2 — Nº BEDROOMS: 1

APARTAMENTOS VALDEMAR (Nº 20254/AL)

Rua Manuel Espregueira
4900-318 Viana do Castelo
T (+351) 966 162 557

E valdemar_lima@sapo.pt

Nº BEDS: 2 — Nº USERS: 3 — Nº BEDROOMS: 1

VANESSA DE LIMA ESTEVES (Nº 10523/AL)

Rua Alberto de Sousa
4900-302 Viana do Castelo
E vanessalestes89@gmail.com

Nº BEDS: 4 — Nº USERS: 6 — Nº BEDROOMS: 3

APARTAMENTO AMOROSA (Nº39492/AL)

Rua dos Búzios, 333, 4º Dtº
4935-580 Viana do Castelo
T (+351) 965 281 406

E domfeliz2013@gmail.com

Nº BEDS: 4 — Nº USERS: 5 — Nº BEDROOMS: 3

APARTAMENTO (Nº 28544/AL)

Rua dos Manjovos, 51, 2º Trás.
4900-326 Viana do Castelo
E portughabit@gmail.com

Nº BEDS: 2 — Nº USERS: 4 — Nº BEDROOMS: 2

APARTAMENTO (Nº 28550/AL)

Rua dos Manjovos, 51, 1º FR.
4900-326 Viana do Castelo
E portughabit@gmail.com

Nº BEDS: 1 — Nº USERS: 2 — Nº BEDROOMS: 0

APARTAMENTO (Nº 28547/AL)

Rua dos Manjovos, 51, 2º FR.
4900-326 Viana do Castelo
E portughabit@gmail.com

Nº BEDS: 2 — Nº USERS: 4 — Nº BEDROOMS: 2

CASA EIFFEL (Nº23776/AL)

Rua dos Caleiros
4900-512 Viana do Castelo
E miguel.araujo@m2m4a.com

Nº BEDS: 2 — Nº USERS: 4 — Nº BEDROOMS: 2

APARTAMENTO (Nº 31893/AL)

Rua dos Manjovos, 51, 1º Tras.
4900-326 Viana do Castelo
E portughabit@gmail.com

Nº BEDS: 1 — Nº USERS: 2 — Nº BEDROOMS: 0

ENJOY VIANA GUEST HOUSE (Nº34911/AL)

Passeio das Mordomas da Romaria
4904-877 Viana do Castelo
E isabelquesadoramos@hotmail.com

Nº BEDS: 4 — Nº USERS: 5 — Nº BEDROOMS: 1

EMILY'S APARTMENT (Nº27275/AL)

Rua Martim Velho
4900-486 Viana do Castelo
E joanafelgueiras@economoo.pt

Nº BEDS: 2 — Nº USERS: 4 — Nº BEDROOMS: 2

MARIA DE FÁTIMA MOREIRA DE OLIVEIRA (Nº 49722/AL)

Rua da Vedoria
4900-335 Viana do Castelo
E k4pital15@gmail.com

Nº BEDS: 1 — Nº USERS: 2 — Nº BEDROOMS: 1

RUA GRANDE, 30 2º ESQ. TRÁS (Nº 48722/AL)

Rua Grande
4900-542 Viana do Castelo
E jprcrqueira@gmail.com

Nº BEDS: 3 — Nº USERS: 4 — Nº BEDROOMS: 2

ALOJAMENTO LOCAL FERROS (Nº 51378/AL)

Rua Gago Coutinho
4900-510 Viana do Castelo
E eugenia.sousa@live.com.pt

Nº BEDS: 3 — Nº USERS: 4 — Nº BEDROOMS: 2

SPACIOUS APT. IN VIANA'S TOP LOCATION (Nº 49919/AL)

Rua Manuel Espregueira
4900-318 Viana do Castelo
E joaopomboveloso@hotmail.com

Nº BEDS: 7 — Nº USERS: 9 — Nº BEDROOMS: 4

MORDOMA GUEST HOUSE (Nº 36524/AL)

Praça da Erva, nº3, 3 2º
4900-525 Viana do Castelo
T (+351) 258 817 880 / 917 946 537

E soledad_curto@hotmail.com

Nº BEDS: 4 — Nº USERS: 6 — Nº BEDROOMS: 2

CASAS DO PRIOR (Nº 57158 /AL)

Rua Prior do Crato
4900-550 Viana do Castelo
E sergio@distintiveportugal.com

Nº BEDS: 3 — Nº USERS: 4 — Nº BEDROOMS: 2

VIANAVISTA (Nº29523/AL)

Largo Álvaro Salema
4900-440 Viana do Castelo
E fernandameiri@hotmail.com

Nº BEDS: 5 — Nº USERS: 6 — Nº BEDROOMS: 3

MORDOMA GUEST HOUSE (Nº 36522/AL)

Praça da Erva, nº3, 3 1º
4900-525 Viana do Castelo
T (+351) 258 817 880 / 917 946 537

E soledad_curto@hotmail.com

Nº BEDS: 2 — Nº USERS: 3 — Nº BEDROOMS: 1

MAGNÓLIA APARTMENT (Nº36008/AL)

Rua Fernanda Soares
4900-228 Viana do Castelo
E xaninhah94@hotmail.com

Nº BEDS: 2 — Nº USERS: 4 — Nº BEDROOMS: 1

CASA DA SÉ (Nº 45378/AL)

Rua do Poço
4900-519 Viana do Castelo
E madalenafa@gmail.com
Nº BEDS: 4 – Nº USERS: 8 – Nº BEDROOMS: 4

CASA DA NESPEREIRA (Nº 45914/AL)

Rua Cândido dos Reis
4900-082 Viana do Castelo
E raquel.sc7@live.com.pt
Nº BEDS: 1 – Nº USERS: 2 – Nº BEDROOMS: 1

TULIPA APARTMENT (Nº34159/AL)

Rua Fernanda Soares
4900-228 Viana do Castelo
E joserosario9@msn.com
Nº BEDS: 2 – Nº USERS: 4 – Nº BEDROOMS: 1

APARTAMENTO HIMALAIA (Nº 57398/AL)

Rua Padre Himalaia, 145, R/C, Esq. Fr.
4900-926 Viana do Castelo
E vitorlourenco@yahoo.com
Nº BEDS: 4 – Nº USERS: 6 – Nº BEDROOMS: 3

VIANA – MONSERRATE (Nº41091/AL)

Rua do Bairro de S. Roque, 70
4900-929 Viana do Castelo
T (+351) 927 811 099
E vedoria.viana@gmail.com
Nº BEDS: 6 – Nº USERS: 7 – Nº BEDROOMS: 3

APARTAMENTO (Nº 32872/AL)

Rua de Lencastre
4900-303 Viana do Castelo
zebiojm@hotmail.com
Nº BEDS: 6 – Nº USERS: 8 – Nº BEDROOMS: 4

CORAÇÃO DE VIANA (Nº 46568/AL)

Rua Cândido dos Reis
4900-082 Viana do Castelo
E betacosta@portugalmail.pt
Nº BEDS: 1 – Nº USERS: 2 – Nº BEDROOMS: 0

VIANAPART (Nº 48588 /AL)

Vieia São Domingos
4900-332 Viana do Castelo
E arter74@hotmail.com
Nº BEDS: 2 – Nº USERS: 4 – Nº BEDROOMS: 1

CASA DA VINHA (Nº28214/AL)

Rua da Vinha, 225, R/C, FT
4900-936 Areosa
T (+351) 258 825 844/ 935 852 550
E dianagarrido@sapo.pt
Nº BEDS: 6 – Nº USERS: 6 – Nº BEDROOMS: 3

AREIAS BEACH APARTMENT (Nº 59248/AL)

Rua Arq. André Soares
4935-165 Darque
E l.bmorais@hotmail.com
Nº BEDS: 2 – Nº USERS: 4 – Nº BEDROOMS: 1

APARTAMENTO CABEDEL (Nº 15033/AL)

Rua Arquiteto André Soares, LT 92
4935-165 Darque
E nunombranco@portugalmail.pt
Nº BEDS: 2 – Nº USERS: 4 – Nº BEDROOMS: 1

CABEDEL BEACH APARTMENT (Nº45793/AL)

Rua José do Rego Lopes, 31, 2º Esq.
4935-227 Darque
T (+351) 914 368 435
E nadia.morais.ferreira@gmail.com
Nº BEDS: 3 – Nº USERS: 5 – Nº BEDROOMS: 2

CABEDEL APARTMENT (Nº22614/AL)

Rua Mateus Lopes
4935-154 Darque
E josousavieira@gmail.com
Nº BEDS: 3 – Nº USERS: 6 – Nº BEDROOMS: 3

BRISAS DO CABEDEL (Nº 63423/AL)

Rua José Rego Lopes, Lote 41, Cabedel
4935-227 Darque
E maruco@sapo.pt
Nº BEDS: 2 – Nº USERS: 4 – Nº BEDROOMS: 1

THE SEA APARTMENT (Nº42449/AL)

Avenida do Cabedel
4930-648 Darque
E casimiro.campelo@gmail.com
Nº BEDS: 4 – Nº USERS: 5 – Nº BEDROOMS: 2

DELUXE APARTMENT (Nº29241/AL)

Rua Domingos da Costa Rodrigues
4935-225 Darque
E joserosario9@msn.com
Nº BEDS: 2 – Nº USERS: 4 – Nº BEDROOMS: 1

JOSÉ LUÍS DA ROCHA CEIA (Nº 21630/AL)

Rua André Soares
4935-165 Darque
E ceia.luis@gmail.com
Nº BEDS: 1 – Nº USERS: 2 – Nº BEDROOMS: 0

À BEIRA PRAIA (Nº31681/AL)

Avenida Cabedel
4935-160 Darque
E pdromigl.santos@gmail.com
Nº BEDS: 3 – Nº USERS: 5 – Nº BEDROOMS: 2

ABELAPARTMENTS (Nº19502/AL)

Av.do Cabedel, Complexo Turístico do Cabedel,
setor 1, nº 186-4º
4935-160 Darque
T (+351) 966 161 557
E abelapartments@gmail.com
Nº BEDS: 1 – Nº USERS: 2 – Nº BEDROOMS: 1

DUNAS (Nº 1631/AL)

Rua Arquiteto André Soares
4935-165 Darque
E segurosacf@hotmail.com
Nº BEDS: 1 – Nº USERS: 4 – Nº BEDROOMS: 0

APARTAMENTO EDIFÍCIO PANORÂMICO II
(Nº32006/AL)

Paulo VI - Cais Novo
4900-058 Darque
E holidaysalr@gmail.com
Nº BEDS: 4 – Nº USERS: 6 – Nº BEDROOMS: 3

CASA DO CAIS NOVO (Nº 16980/AL)

1ª Travessa Antúrios - Cais Novo
4935-133 Darque

E beatriz-machado@hotmail.com

Nº BEDS: 4 – Nº USERS: 6 – Nº BEDROOMS: 3

APARTAMENTO (Nº 46497/AL)

Rua Fernão Martins Costa - Cabedelo
4930-648 Darque

E rod.sandra@hotmail.com

Nº BEDS: 3 – Nº USERS: 4 – Nº BEDROOMS: 2

LOVELY BEACH APARTMENT (Nº 47404/AL)

Rua João Lopes O Velho
4935-156 Darque

E vianaclaudia@sapo.pt

Nº BEDS: 1 – Nº USERS: 2 – Nº BEDROOMS: 1

T3 AMOROSA (Nº 17129/AL)

Praça Camões – Praia da Amorosa
4935-580 Chafé

E fernandojoaopires@gmail.com

Nº BEDS: 4 – Nº USERS: 6 – Nº BEDROOMS: 3

APARTAMENTO PRAIA DA AMOROSA (Nº34861/AL)

Rua Redes
4935-580 Chafé

E vcruz1970@hotmail.com

Nº BEDS: 4 – Nº USERS: 6 – Nº BEDROOMS: 2

JOÃO JOSÉ NEIVA PASSOS (Nº 13185/AL)

Avenida Central
4935-580 Chafé

E neivapassos@sapo.pt

Nº BEDS: 2 – Nº USERS: 4 – Nº BEDROOMS: 2

AR PURO – ALOJAMENTO LOCAL (Nº 17785/AL)

Praça Sol
4935-580 Chafé

E carlos.viana9232@gmail.com

Nº BEDS: 3 – Nº USERS: 6 – Nº BEDROOMS: 2

APARTAMENTO AMOROSA (Nº 54985/AL)

Avenida Central
4935-580 Chafé

E lipemc14@gmail.com

Nº BEDS: 4 – Nº USERS: 5 – Nº BEDROOMS: 1

APARTAMENTO AMOROSA (Nº 52971/AL)

Avenida Primeira
4935-580 Chafé

E ana_s_barbosa@hotmail.com

Nº BEDS: 2 – Nº USERS: 6 – Nº BEDROOMS: 2

AR PURO II (Nº 49370/AL)

Rua Sol
4935-580 Chafé

E carlos.viana9232@gmail.com

Nº BEDS: 1 – Nº USERS: 3 – Nº BEDROOMS: 0

APARTAMENTO T3 AMOROSA (Nº 45073/AL)

Praça Minho, Lote 178/179
4935-580 Chafé

E jhneiva@hotmail.com

Nº BEDS: 3 – Nº USERS: 6 – Nº BEDROOMS: 3

APARTAMENTO DA PRAIA (Nº 53870/AL)

Estrada Nacional 13, Isqueiro de Cima
4900-011 Afife

E luismatosrodrigues@gmail.com

Nº BEDS: 2 – Nº USERS: 6 – Nº BEDROOMS: 2

APARTAMENTO PRAIA E CAMPO (Nº 9568/AL)

Urbanização Bouça Cabrita
4900-012 Afife

E armanda.cruz1@gmail.com

Nº BEDS: 2 – Nº USERS: 4 – Nº BEDROOMS: 1

ATLANTIC VIEW (Nº 28640/AL)

Urbanização Bouça Cabrita
4900-012 Afife

E info@atlanticview.eu

Nº BEDS: 5 – Nº USERS: 8 – Nº BEDROOMS: 3

TI AFIFE (Nº 53775/AL)

Estrada Nacional 13
4900-012 Afife

E alvesdeoliveira.andreia@gmail.com

Nº BEDS: 2 – Nº USERS: 4 – Nº BEDROOMS: 1

APARTAMENTO PRAIA DE AFIFE (Nº 53769/AL)

Estrada Nacional 13
4900-058 Afife

E paula.maria.da.castro@gmail.com

Nº BEDS: 2 – Nº USERS: 4 – Nº BEDROOMS: 0

PC – Campsites**PC – INATEL CABEDEL**

Avenida dos Trabalhadores – Cabedelo
4900-056 Darque

T (+351) 258 322 042 – F (+351) 258 331 502

E pc.cabedelo@inatel.pt – www.inatel.pt

VIANA DO CASTELO ORBITUR

– **PARQUE DE CAMPISMO ***** (Nº 2995)

Rua Diogo Álvares – Cabedelo
4935-161 Darque

T (+351) 258 322 167 – F (+351)258 321 946

E infoviana@orbitur.pt – www.orbitur.pt

CAPACITY: 700

Youth Hostel**POUSADA DA JUVENTUDE VIANA DO CASTELO**

Rua da Límia
4900-405 Viana do Castelo

T (+351) 258 838 458 / 925 665 071

F (+351) 217 232 101

E vianacastelo@movijovem.pt

www.pousadasjuventude.pt

Nº BEDS: 78 – Nº USERS: 78 – Nº BEDROOMS: 26





WWW.CAMINHOPORTUGUESDACOSTA.COM



ROTEIROS VIANA



**DESCOBRIR
VIANA DO CASTELO**

WWW.CM-VIANA-CASTELO.PT



VIANA DO CASTELO

**CÂMARA MUNICIPAL
DE VIANA DO CASTELO**



Passeio das Mordomas da Romaria
4900-877 Viana do Castelo
T. (+351) 258 809 300
www.cm-viana-castelo.pt
cmviana@cm-viana-castelo.pt